

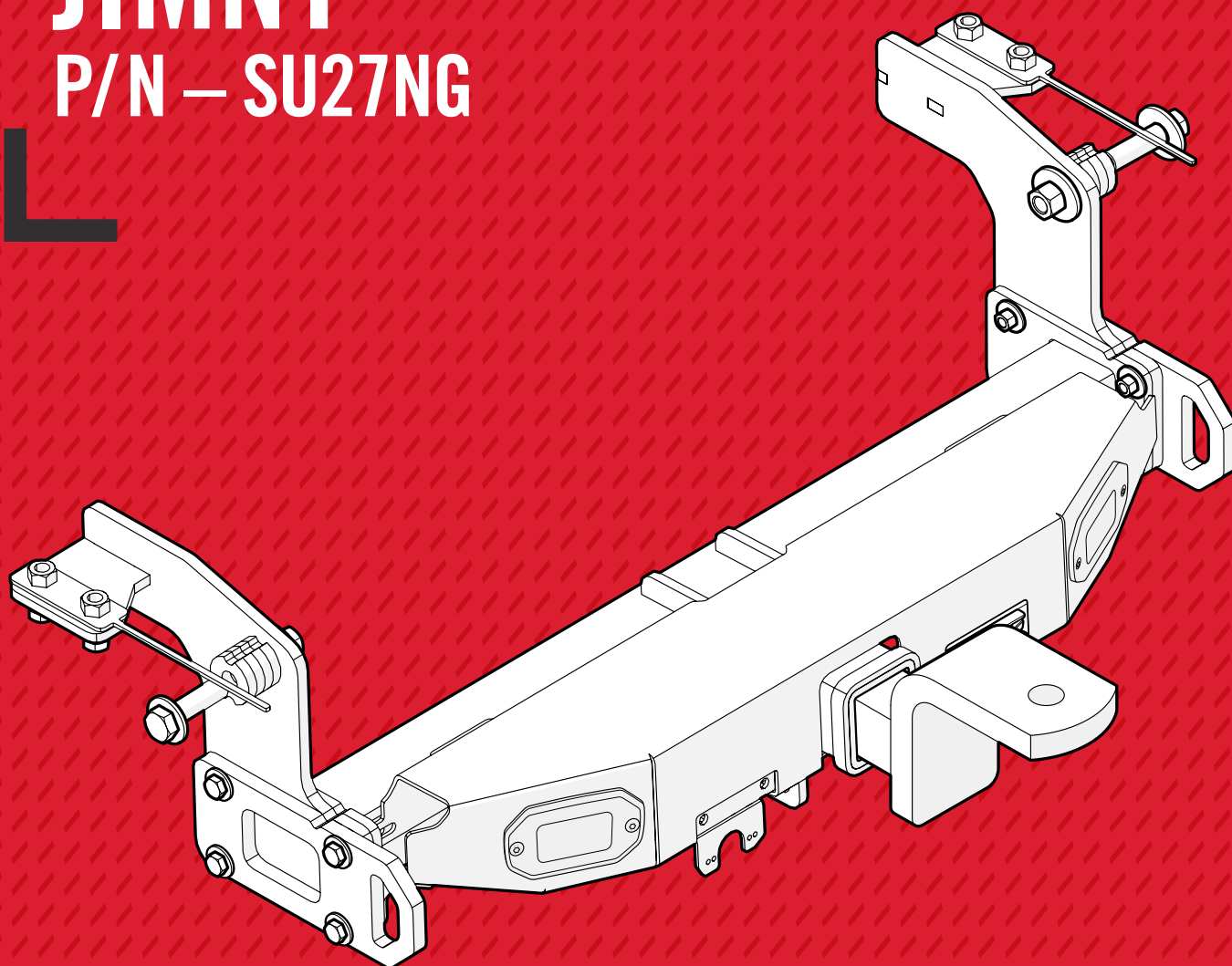


EST 1956
CARASEL®

**FITTING
INSTRUCTIONS**

SUZUKI — JIMNY

P/N — SU27NG



ISSUE #: 01
ISSUE DATE: 05/04/24

CONTROLLED

CONTENTS

3	IMPORTANT INFORMATION
4	PARTS LIST
6	VEHICLE PREPARATION
8	TOWBAR INSTALLATION
11	GENERAL WIRING STEPS
17	FITTING ADDITIONAL COMPONENTS
17	REVERSE LED LIGHTS
19	ANDERSON PLUG BRACKET
19	TRAILER REVERSE CAMERA BRACKET
19	AIRBAG BRACKET
20	FINALISE FITMENT
23	TOWBALL USAGE



IMPORTANT INFORMATION

CHECK THE MAXIMUM TOWING CAPACITY OF YOUR VEHICLE AS STATED BY THE VEHICLE MANUFACTURER.
DO NOT EXCEED THE MAXIMUM TOWING CAPACITY.

This product is for towing purposes only and must only be loaded as shown in your vehicle Owner's Manual.

- This towbar is NOT to be drilled, cut, welded, or modified in any way.
- Check behind chassis rail and body panels before drilling to ensure no hazards are present.
- All load ratings shown are under the assumption your trailer has a functional braking system installed.
- When installed in positions other than the one depicted in these instructions the Tow Ball Mount may interfere or obstruct certain features of your vehicle (tailgate opening, Chassis clearance, etc.)

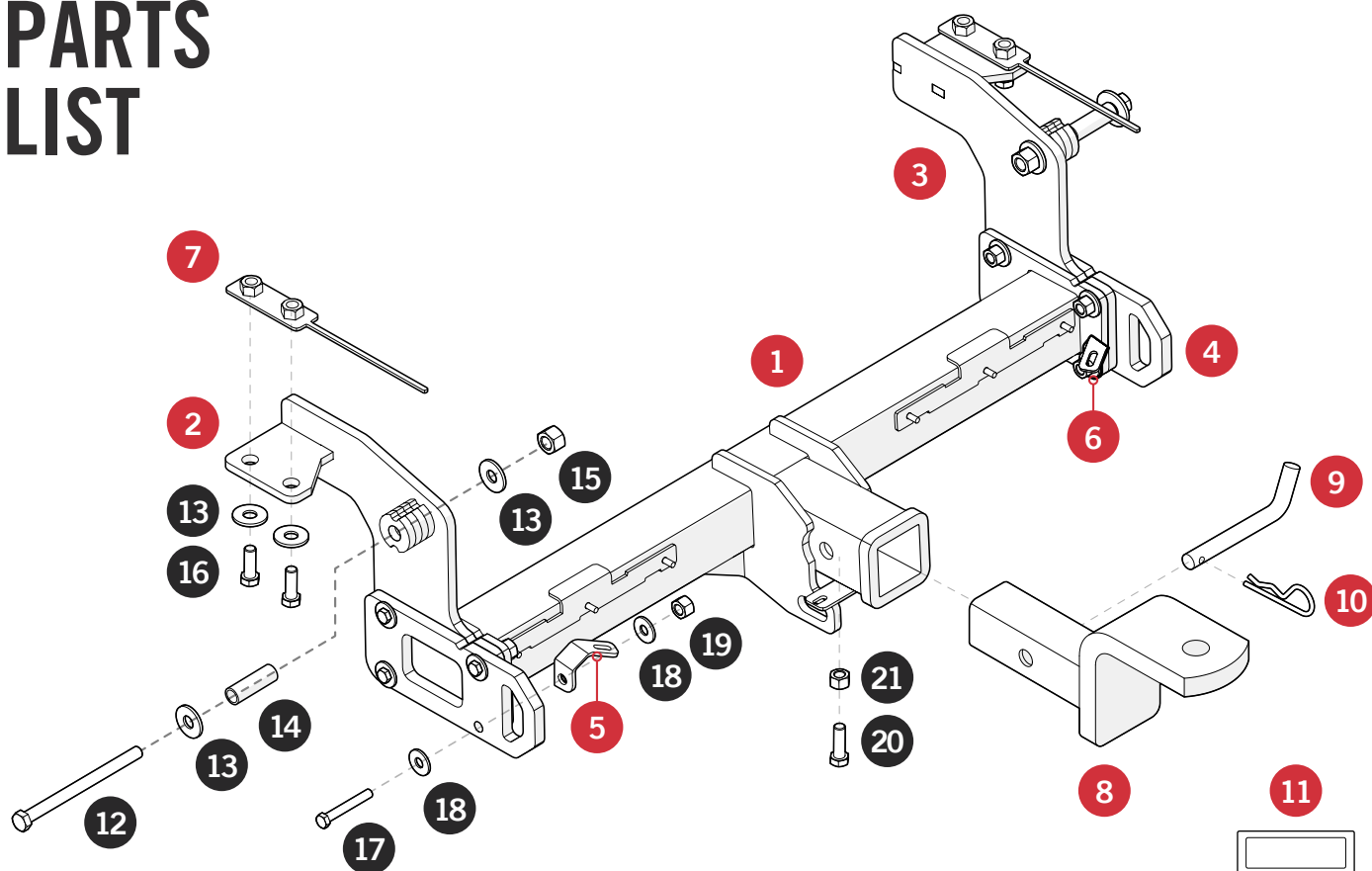
GENERAL:

- Before fitting this towbar read fitting instructions and check installation hardware is correct.
- Check that the towbar is suitable for the vehicle and be wary of any changes to the vehicle design that may conflict with the fitting of this towbar (Tray, Canopy, Suspension etc.)
- After drilling, blow any filings clear, remove any swarf and treat exposed metal with a rust inhibitor.

TOWBAR MAINTENANCE AND CARE:

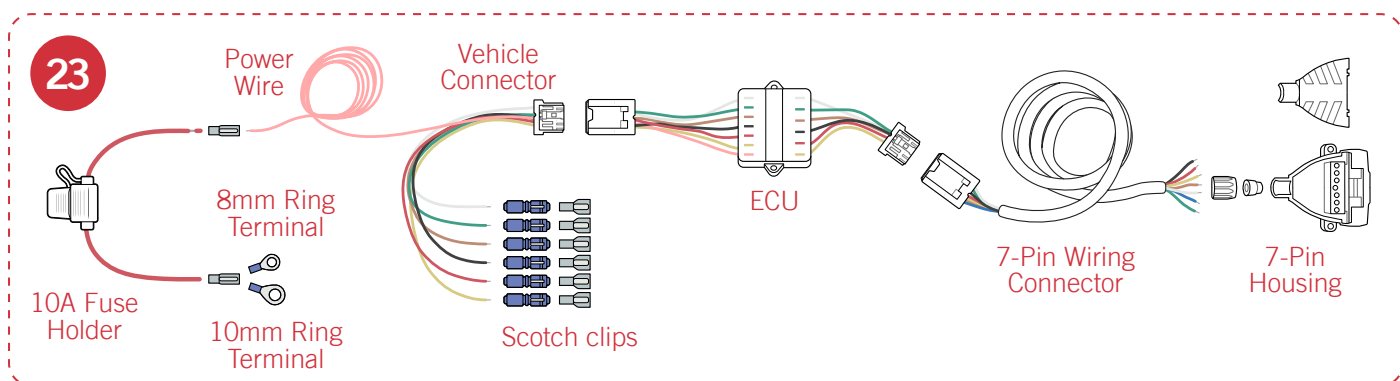
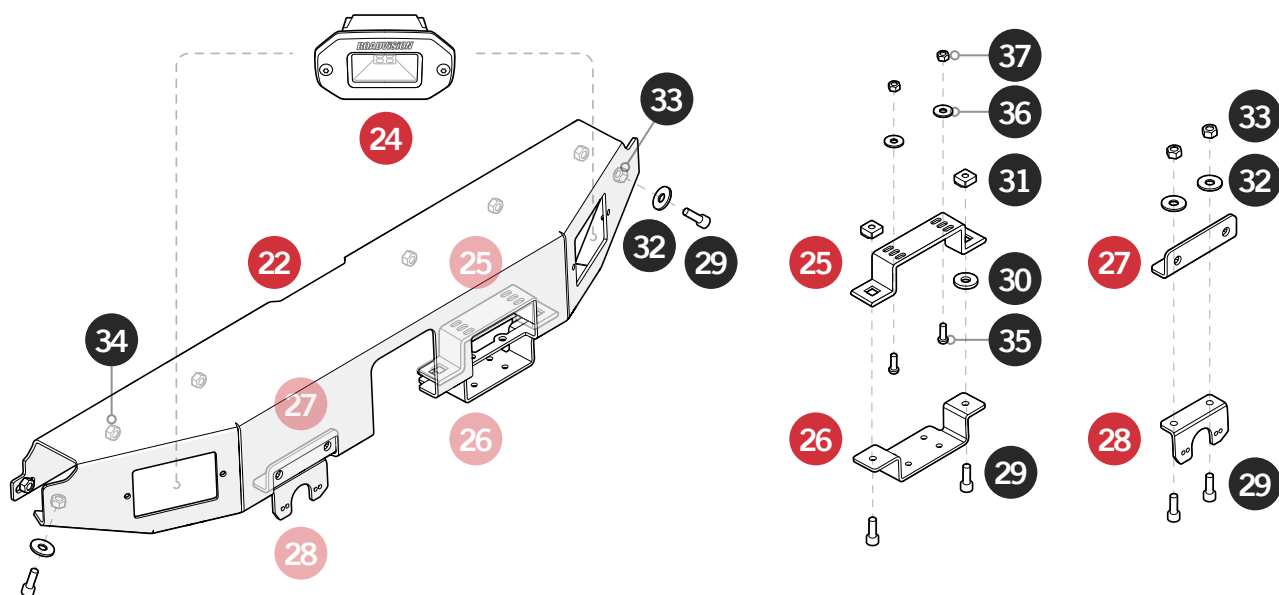
- It is recommended, when not in use, the Tow Ball Mount assembly and CLASS 4 Pin and Clip is stored inside the car away from moisture to prevent standing water from forming rust.
- Inspect to ensure, on regular basis, fasteners are torqued to the specifications below and in good condition.
- Ensure that the fitting instructions are read and understood prior to fitment.
- Place these instructions in the vehicle's glovebox after installation is completed.

PARTS LIST



#	PART	QTY
1	CROSS-BEAM	x1
2	LEFT BRACKET	x1
3	RIGHT BRACKET	x1
4	RECOVERY POINT	x2
5	LEFT DRESS-PLATE BRACKET	x1
6	RIGHT DRESS-PLATE BRACKET	x1
7	CHASSIS PLATE	x2
8	TOWBAR HITCH (UH1)	x1
9	PIN	x1
10	R-CLIP	x1
11	LOAD RATING STICKER	x1

#	HARDWARE	QTY
12	M12 x 120mm x 1.25p BOLT	x2
13	M12 FLAT WASHER	x8
14	50mm SPACER TUBE	x2
15	M12 x 1.25p NUT	x2
16	M12 x 35mm x 1.25p BOLT	x4
17	M10 x 50mm x 1.25p BOLT	x8
18	M10 FLAT WASHER	x16
19	M10 x 1.25p NUT	x8
20	3/8" x 1" UNC BOLT	x1
21	3/8" UNC NUT	x1



#	PART	QTY	#	HARDWARE	QTY
22	DRESS-PLATE	x1	29	M6 SOCKET HEAD BOLT	x6
23	ECU KIT (TOWBAR BYPASS KIT)	x1	30	M6 WASHER (BLACK)	x1
24	REVERSE LED LIGHT KIT	x2	31	M6 CAGE NUT	x2
25	7-PIN BRACKET	x1	32	M6 FLAT WASHER	x4
26	ANDERSON BRACKET	x1	33	M6 NUT	x4
27	AIR BAG BRACKET	x1	34	M6 NYLOC NUT	x6
28	TRAILER CAMERA BRACKET	x1	35	M4 x 16mm BUTTON SCREW	x2
			36	M4 FLAT WASHER	x2
			37	M4 NYLOC NUT	x2

TOOLS REQUIRED



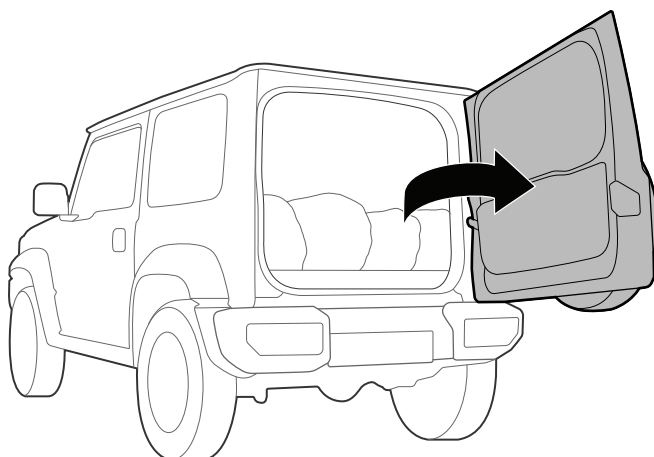
- 19mm Socket Wrench
- 17mm Socket Wrench
- 10mm Socket Wrench
- Trim Removal Tools
- Philips Head Screw Driver
- Power Drill

- x2 M6 Self Tapping Screws
- Safety Knife
- Wire Stripper
- Soldering Iron
- Electrical Tape
- Zip ties x10

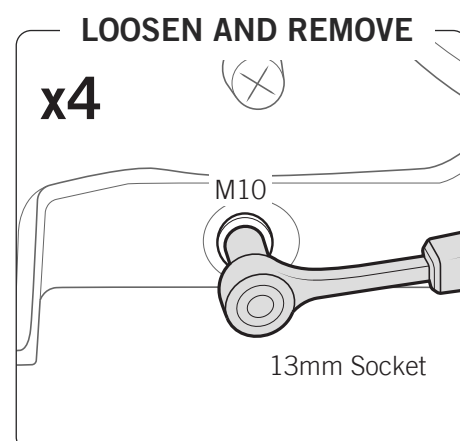
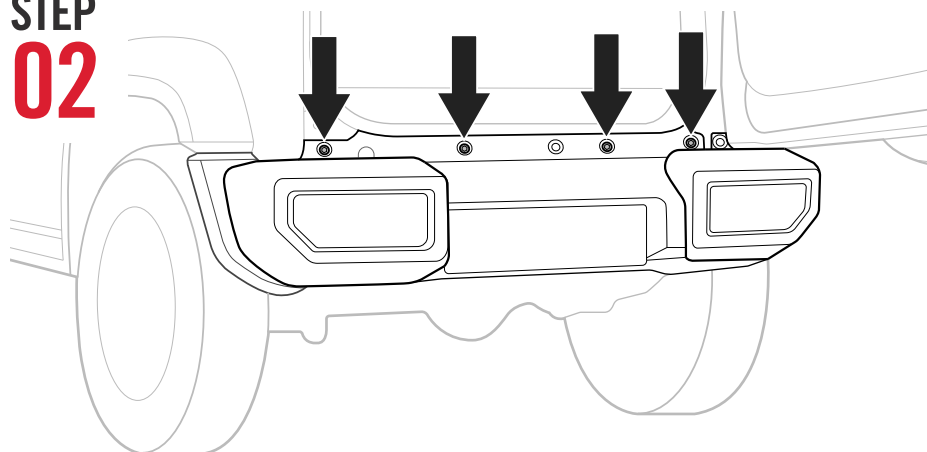
- Electrical Wire 1.5mm (3m)
- Split Wire Loom (5m)
- Twin Core Cable (2m)
- Trailer Light Board / Multimeter

VEHICLE PREPARATION

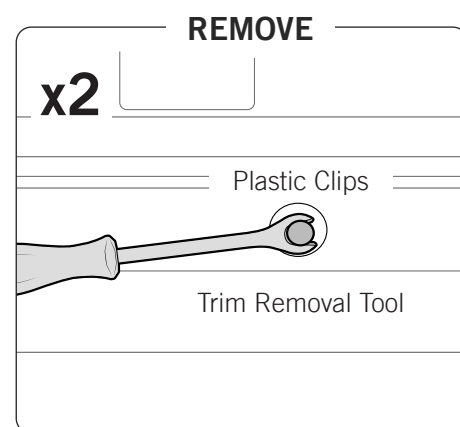
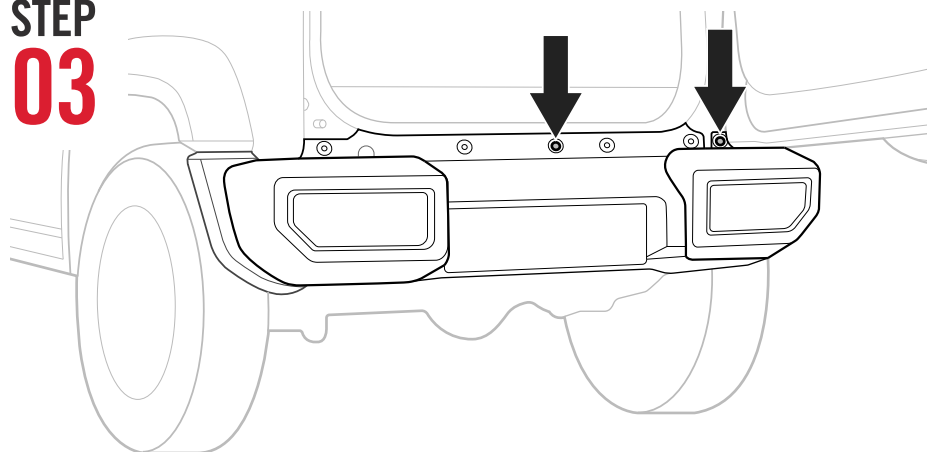
STEP 01



STEP 02

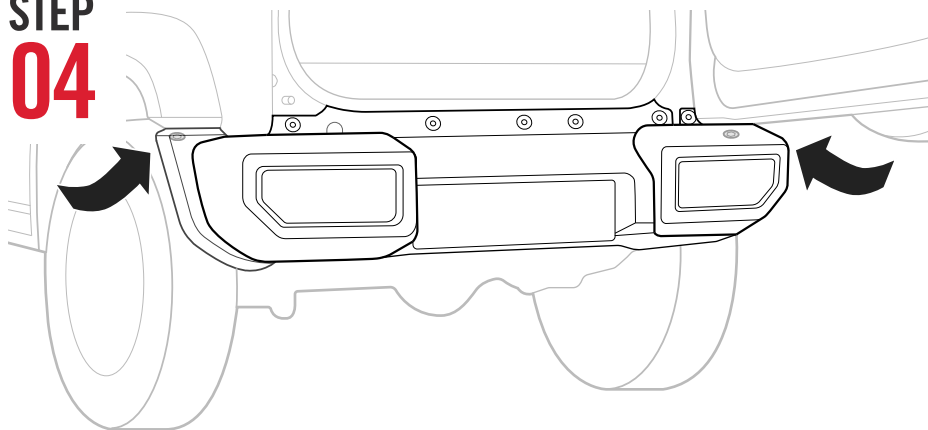


STEP 03



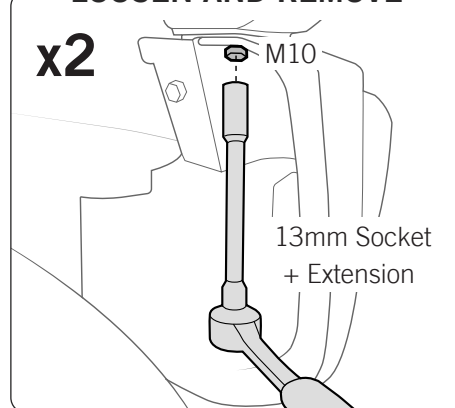


STEP 04

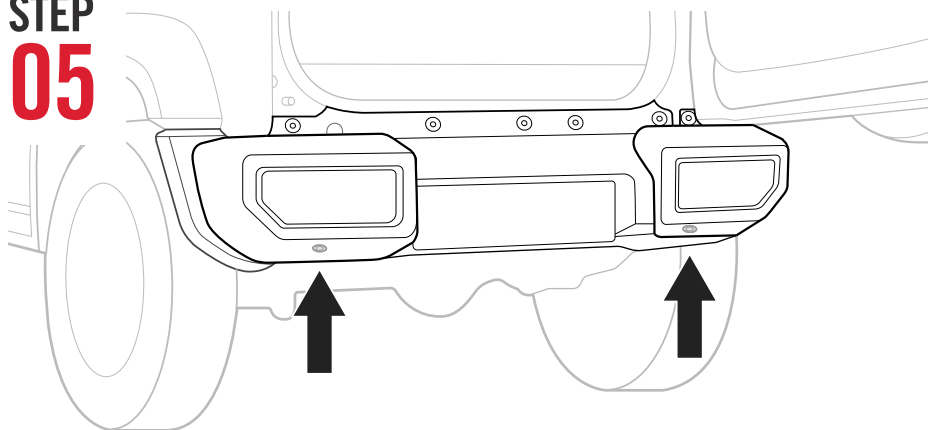


LOOSEN AND REMOVE

x2

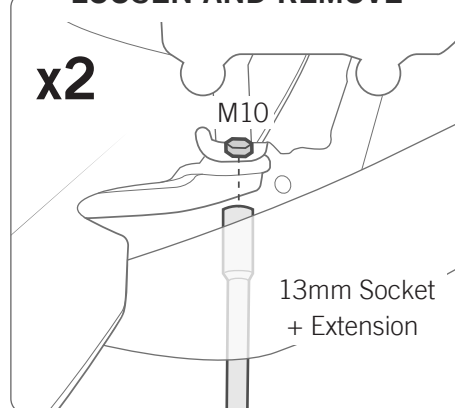


STEP 05



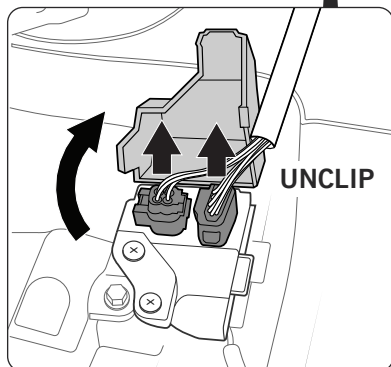
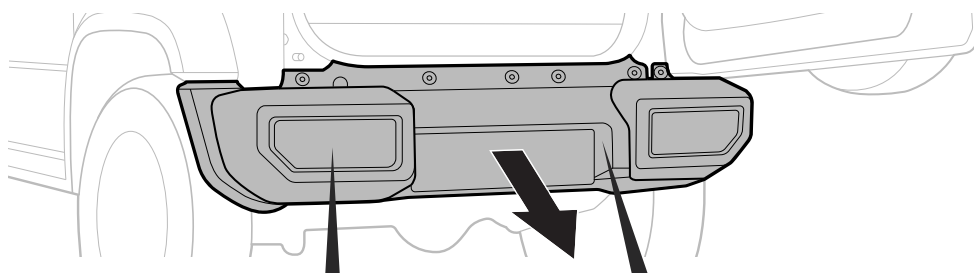
LOOSEN AND REMOVE

x2

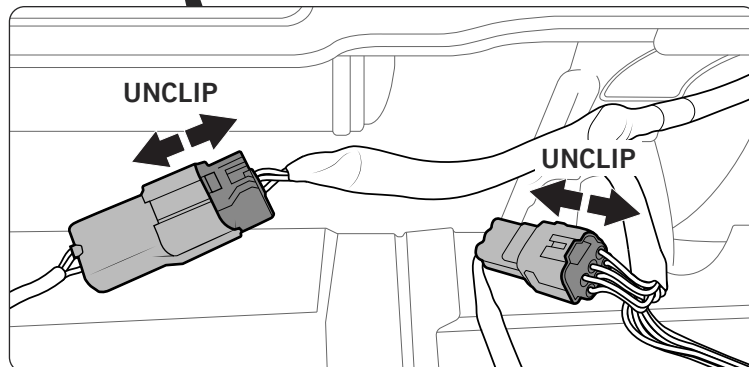


STEP 06

Lift bumper off slightly and unclip the Tail Light harness & Reverse camera harnesses (if equipped). Remove completely.



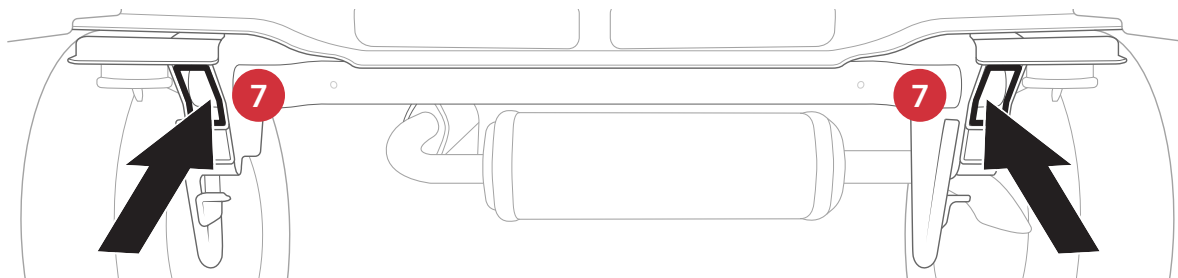
TAIL LIGHT HARNESS



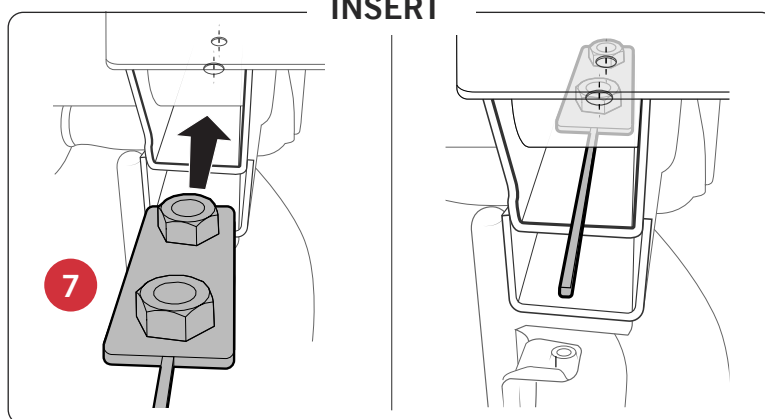
REVERSE CAMERA HARNESS (If equipped)

TOWBAR INSTALLATION

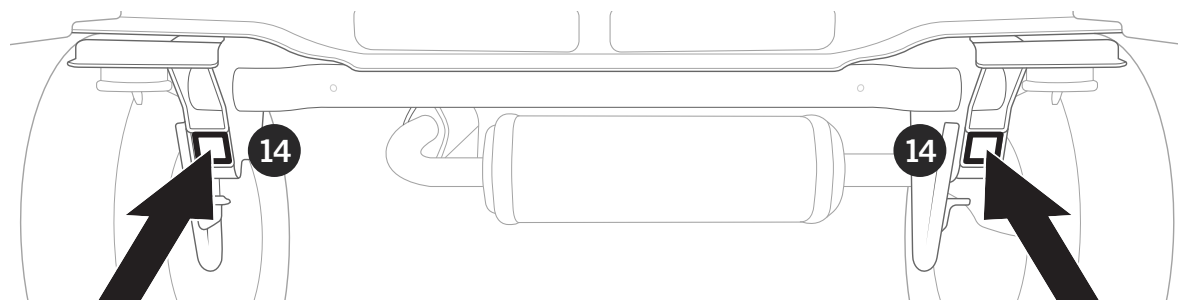
STEP 07



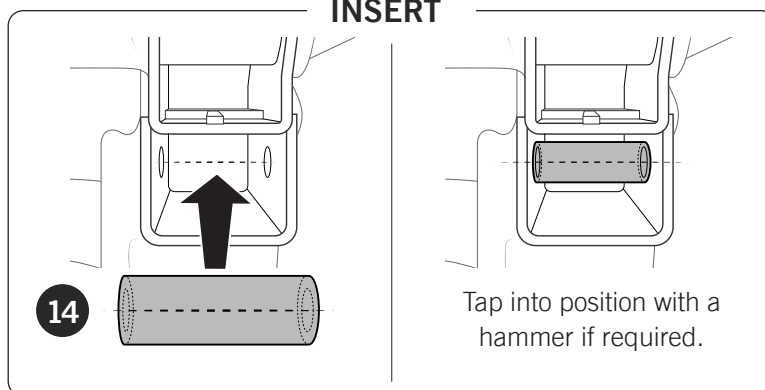
INSERT



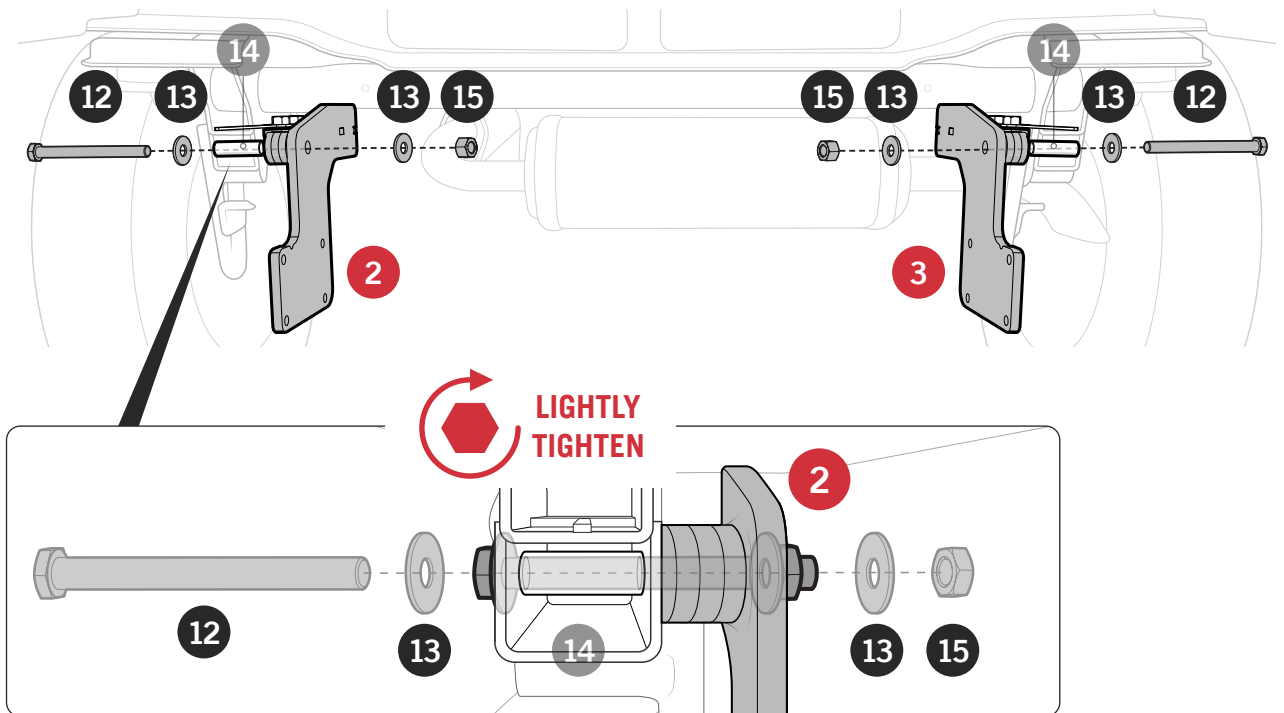
STEP 08



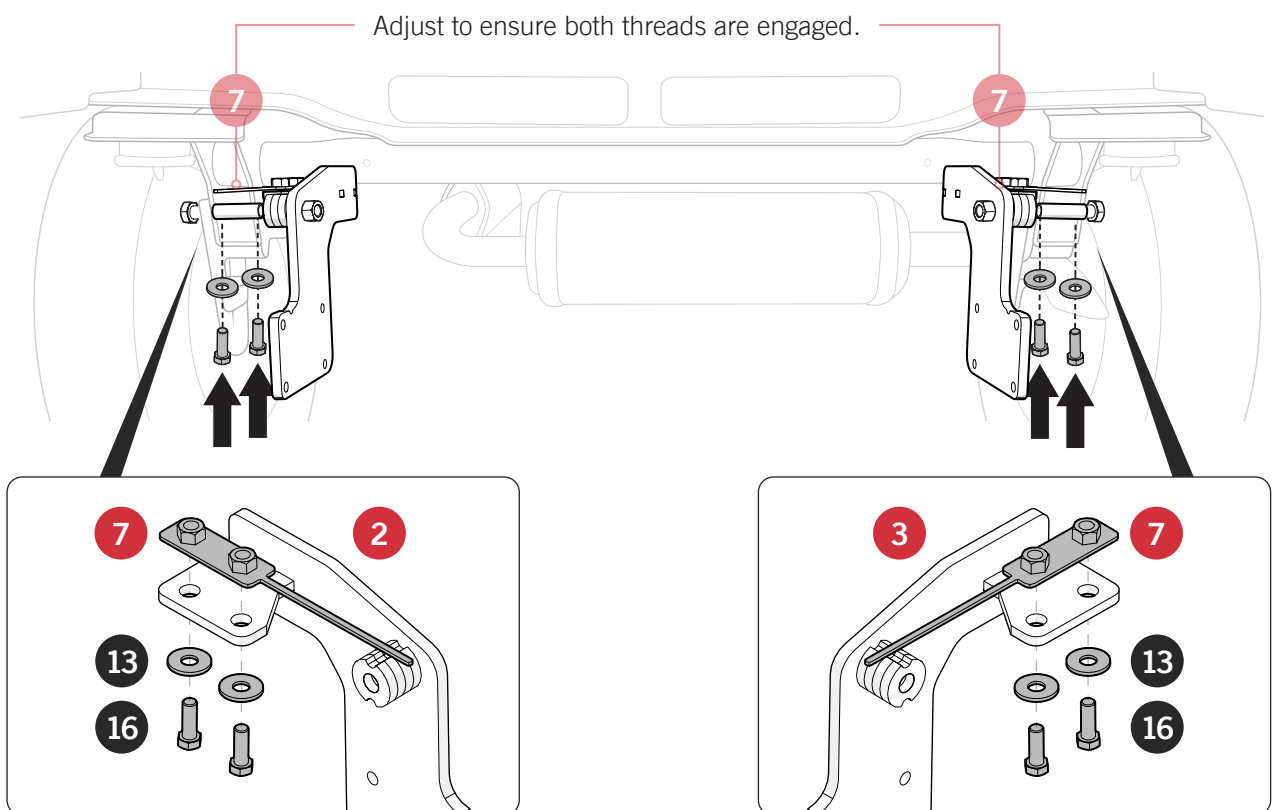
INSERT



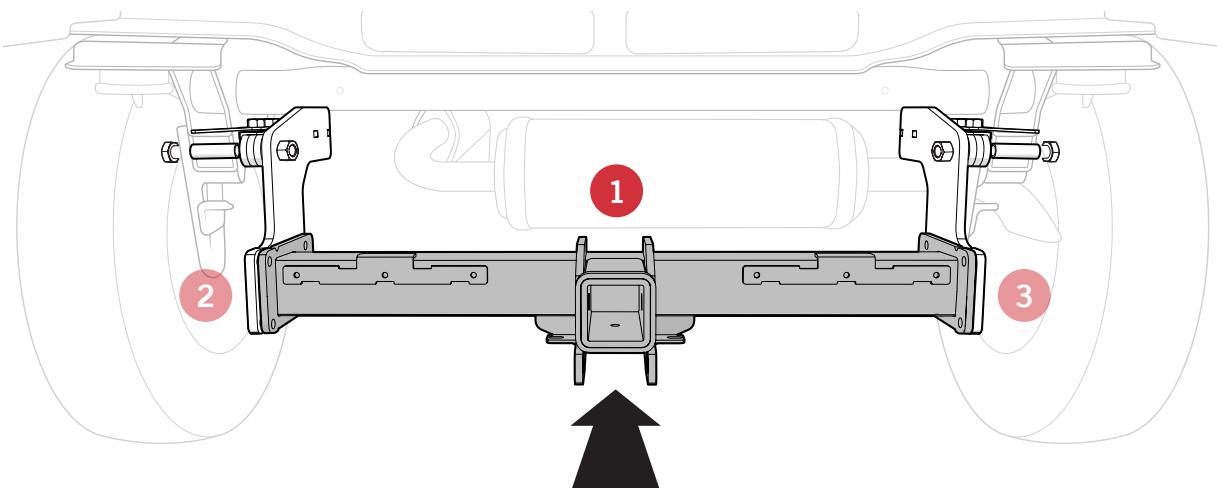
STEP 09



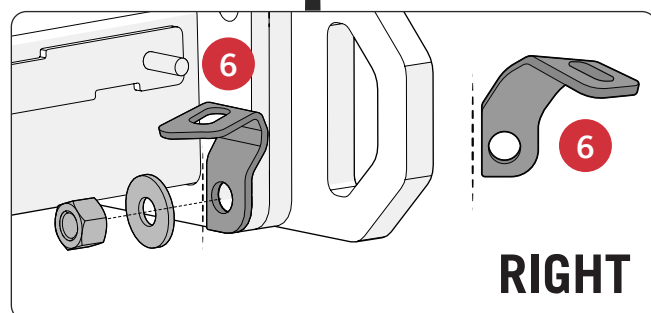
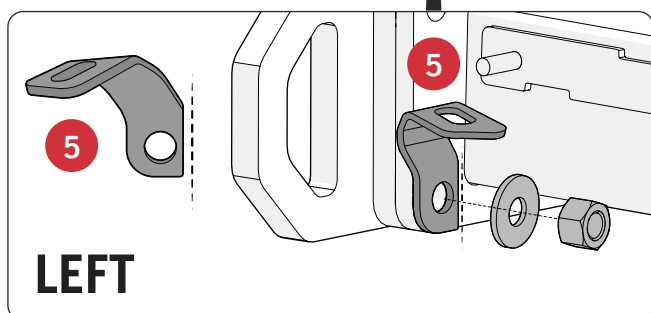
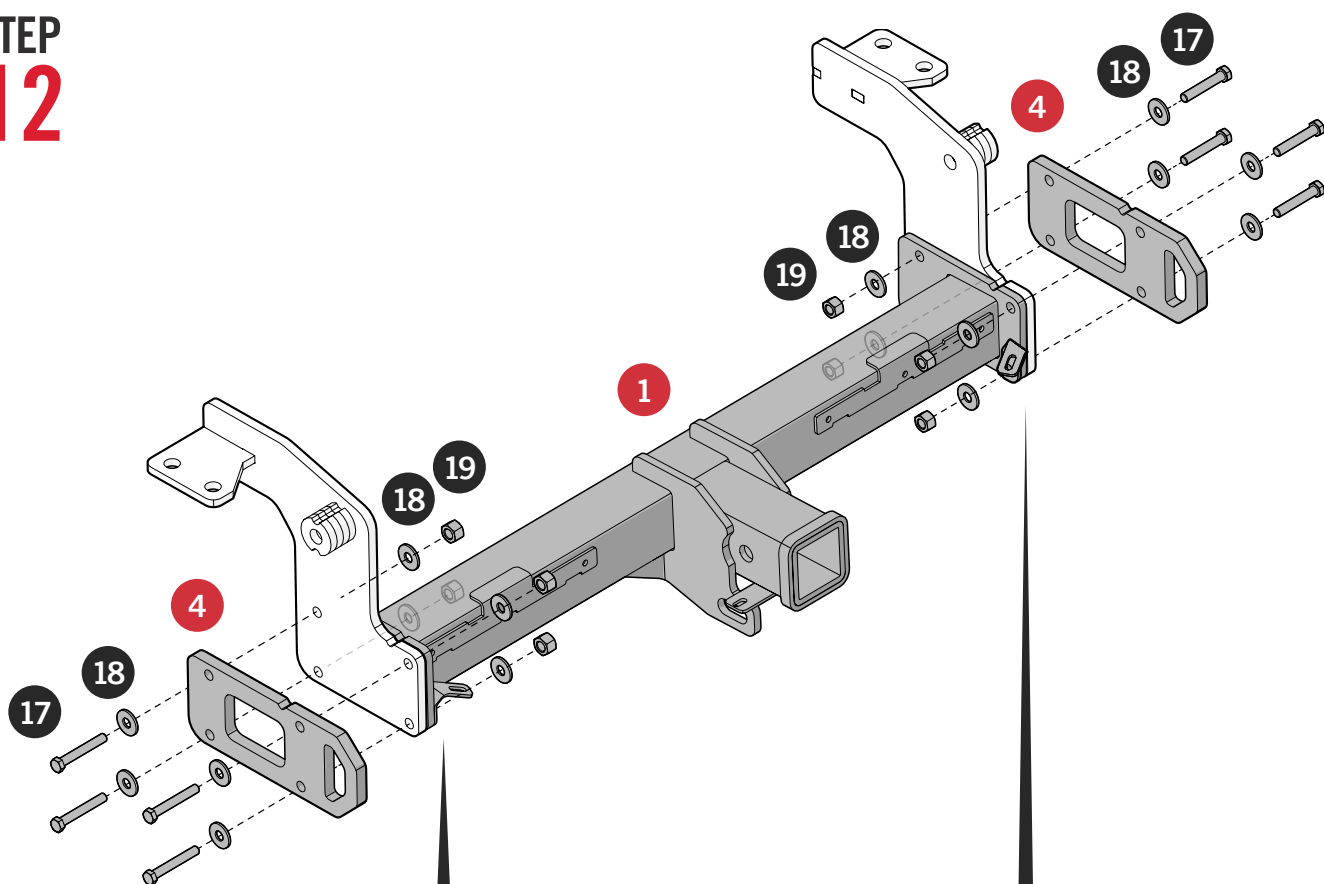
STEP 10



STEP 11

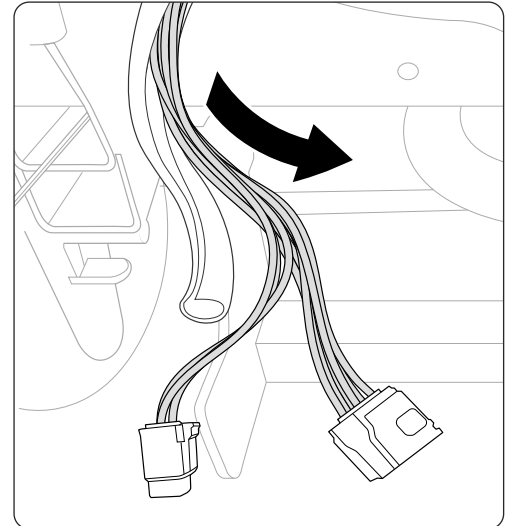
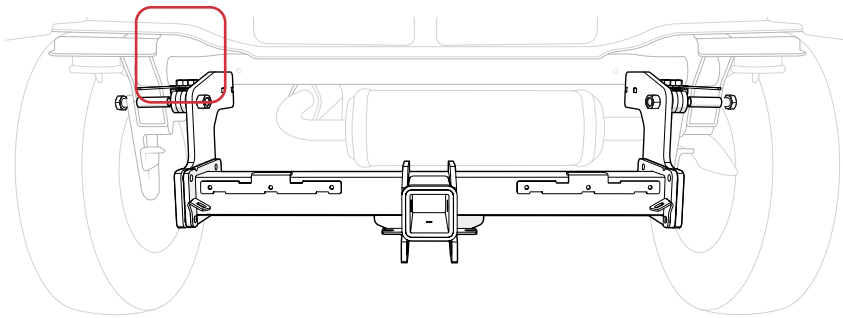


STEP 12



GENERAL WIRING STEPS

STEP 13



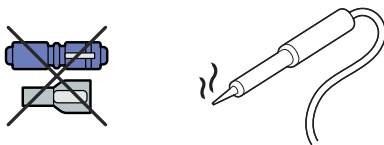
STEP 14

Connect the ECU kit to the light harness on the Left Hand Side of the vehicle.

Solder ECU wires to Vehicle wires as follows:

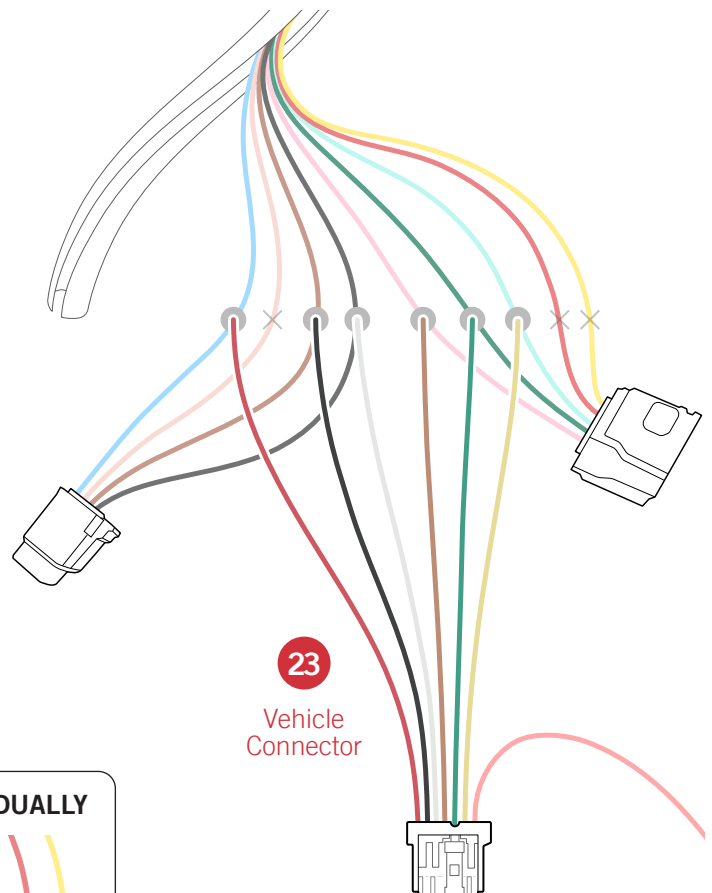
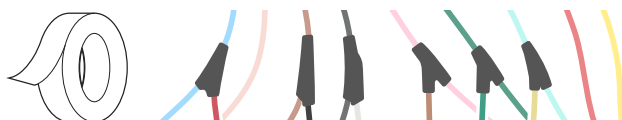
ECU		Vehicle
RED	>	BLUE (Brake light)
BLACK	>	BROWN (Reverse Lights)
WHITE	>	BLACK (Earth)
BROWN	>	LIGHT PINK (Tail Light)
GREEN	>	DARK GREEN (Right Indicator)
YELLOW	>	LIGHT GREEN (Left Indicator)

NOTE: Blue Scotch Clips are NOT suitable for external use due to their susceptibility to corrosion.

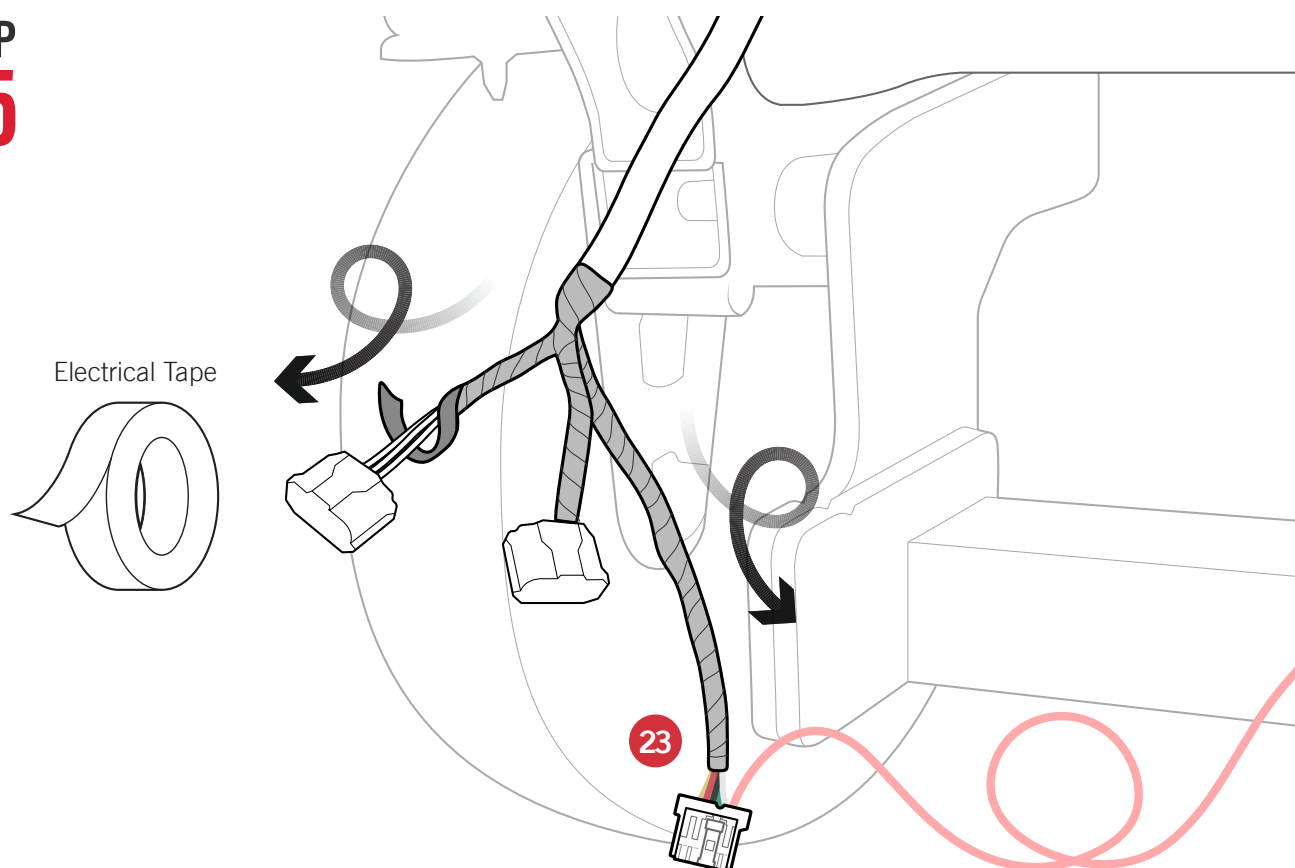


It is highly recommended to **solder all connections.**

TAPE EACH SOLDERED CONNECTION INDIVIDUALLY

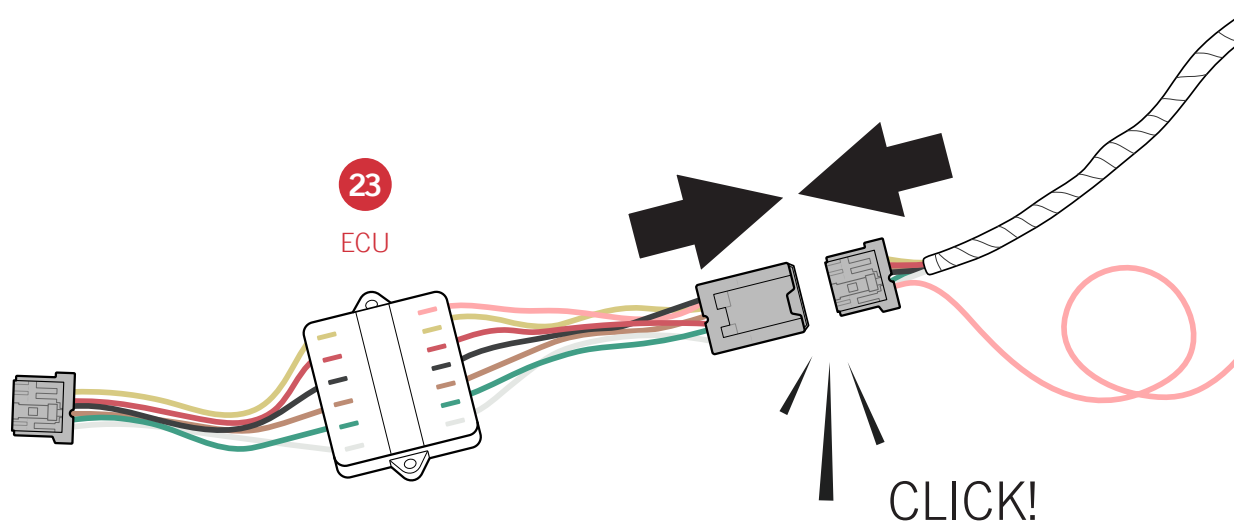


STEP 15



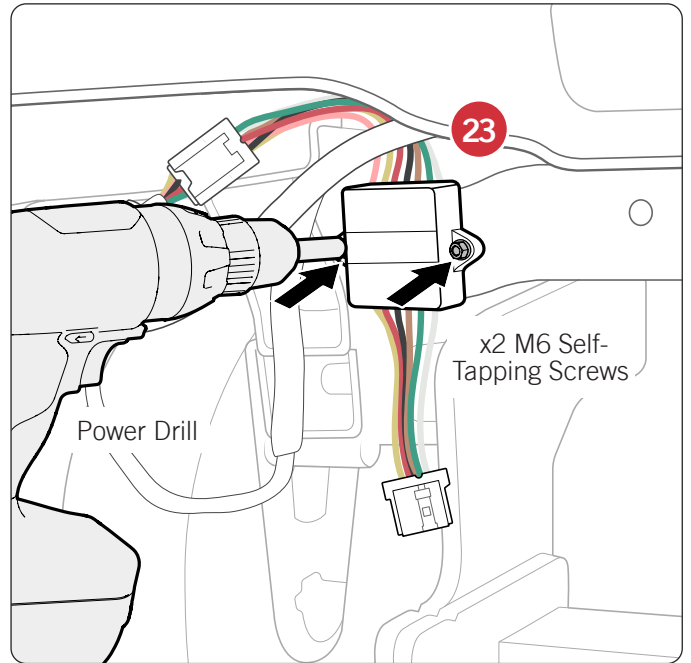
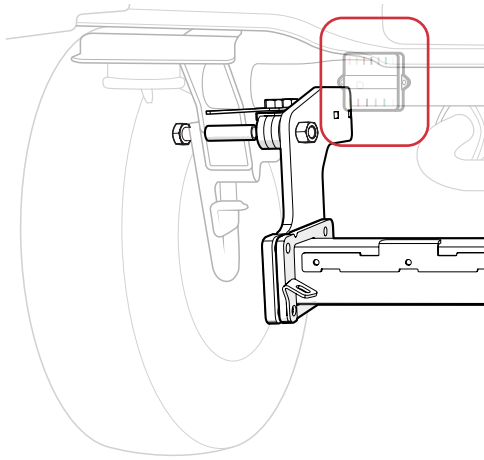
NOTE: Leave **Pink** wire out for **STEP 21**

STEP 16

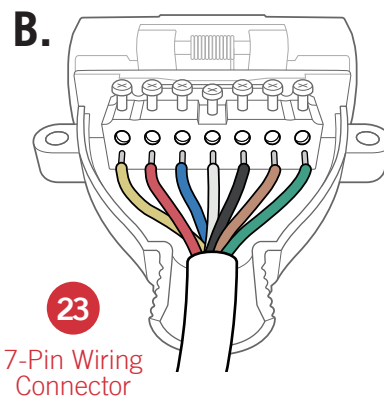
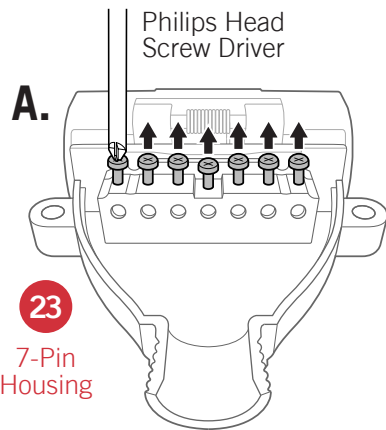


STEP 17

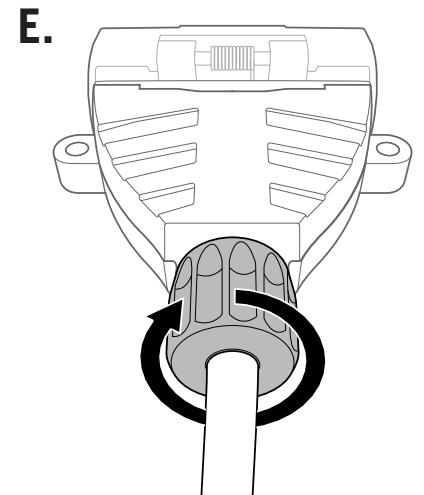
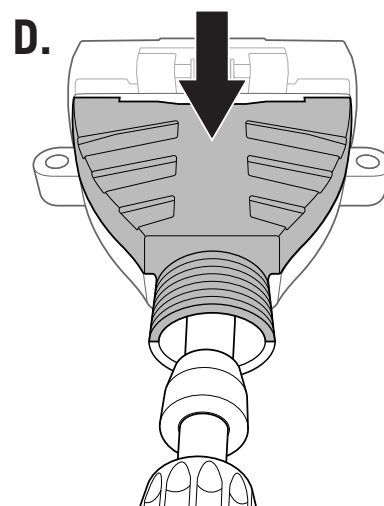
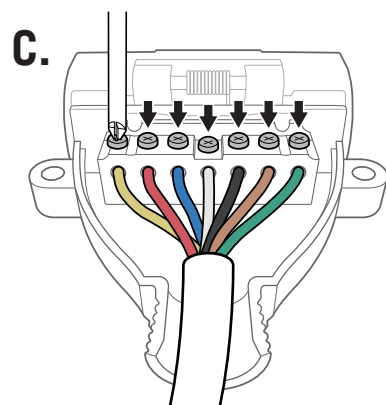
Drill ECU into rear reinforcement bar using x2 Self-Tapping screws. Ensure secure fit.



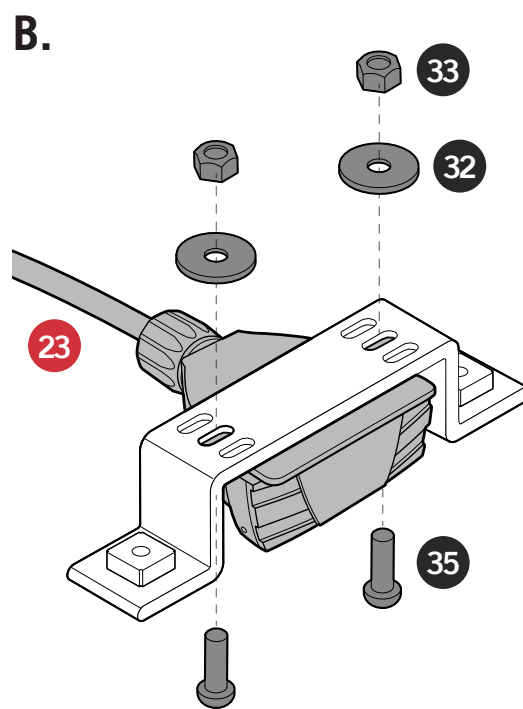
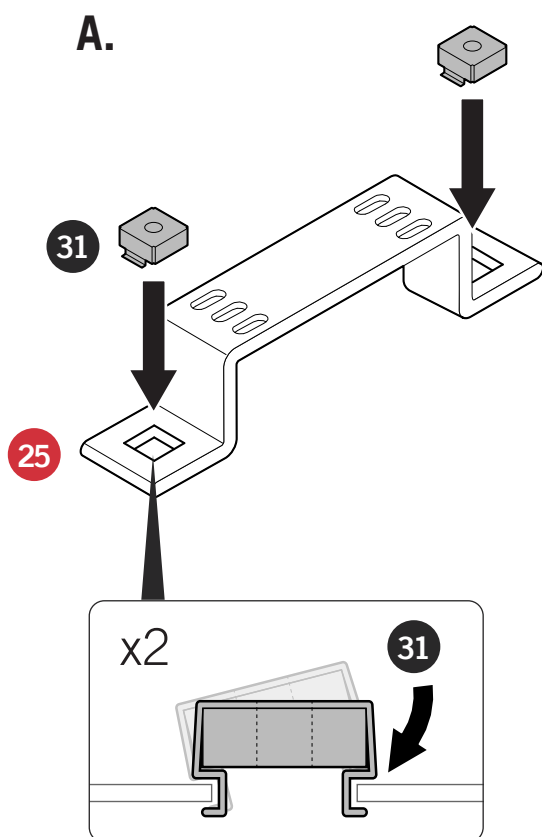
STEP 18



⊗	⊗	⊗	⊗	⊗	⊗	⊗	⊗
L. SIGNAL (Yellow)	BRAKE (Red)	ELECT. BRAKE (Blue)	EARTH (White)	AUXILIARY (Black)	TAIL (Brown)	R. SIGNAL (Green)	

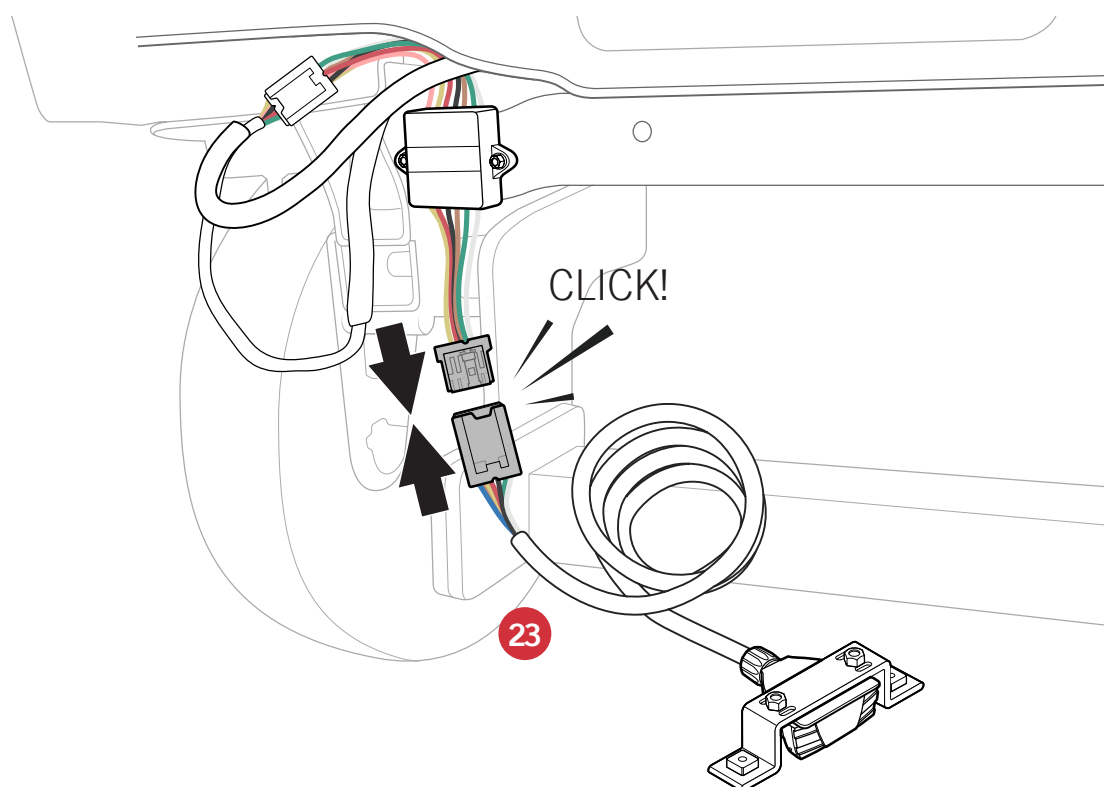


STEP 19



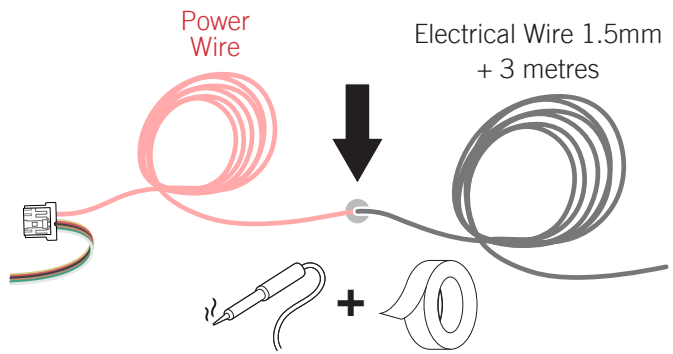
Select most suitable holes so that the 7-pin plug can be easily opened when installed to dress-plate.

STEP 20

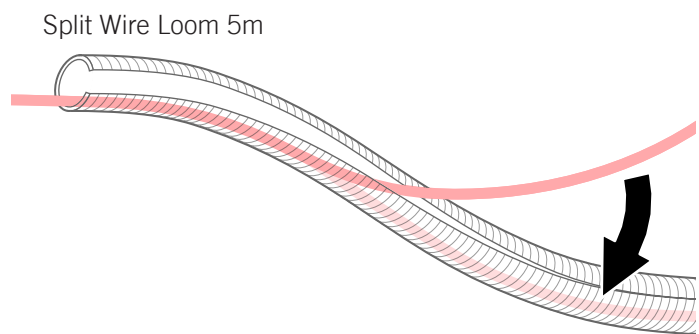


STEP 21

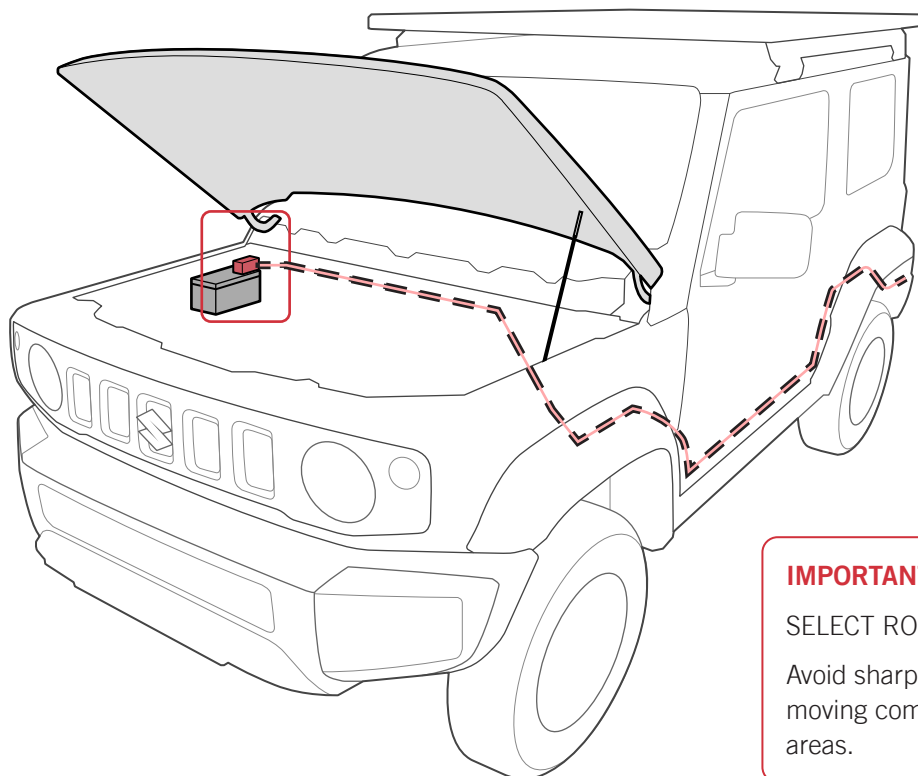
- A.** Lengthen the **Pink** wire so it will reach the battery terminal. Extend by an additional 3 metres.
- Solder and tape connection.



- B.** Insert ALL wire into Split Wire Loom. Trim the Split Wire Loom to match length of wire.



- C.** Route wire with Split Wire loom to battery terminal.



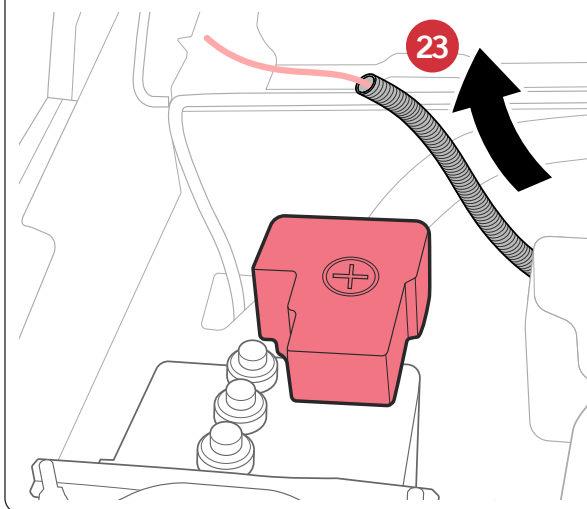
IMPORTANT:

SELECT ROUTE CAREFULLY.

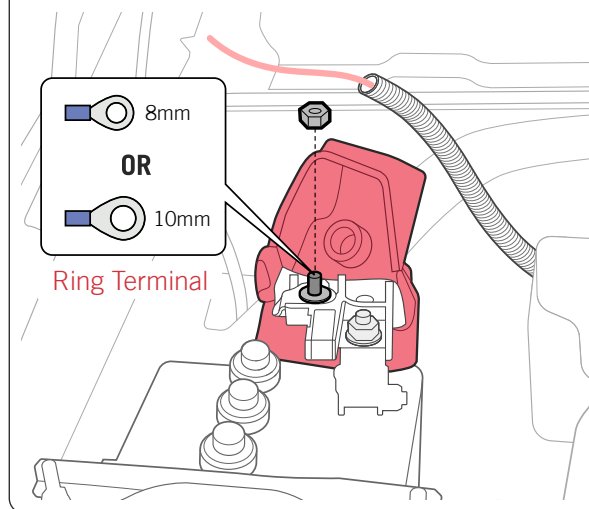
Avoid sharp / abrasive points, moving components and hot areas.

STEP 22

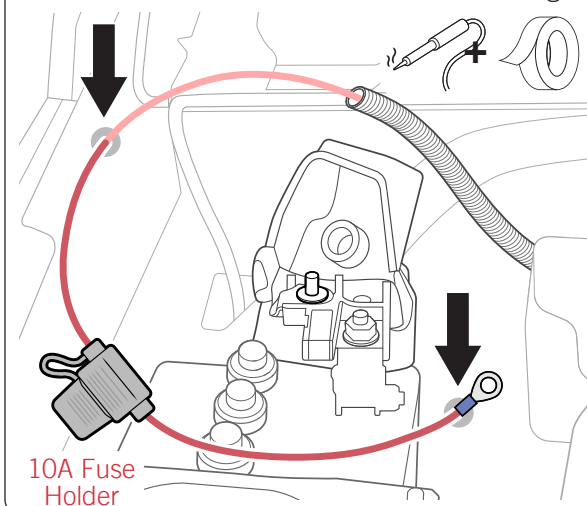
A. Feed Power Wire to Battery.



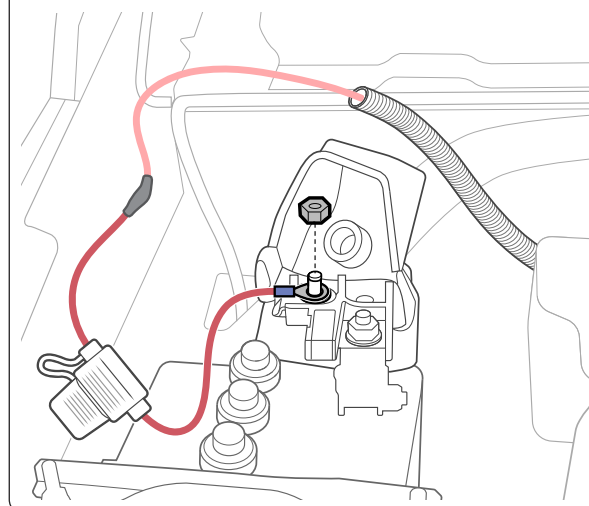
B. Select ring size to suit your battery terminal.



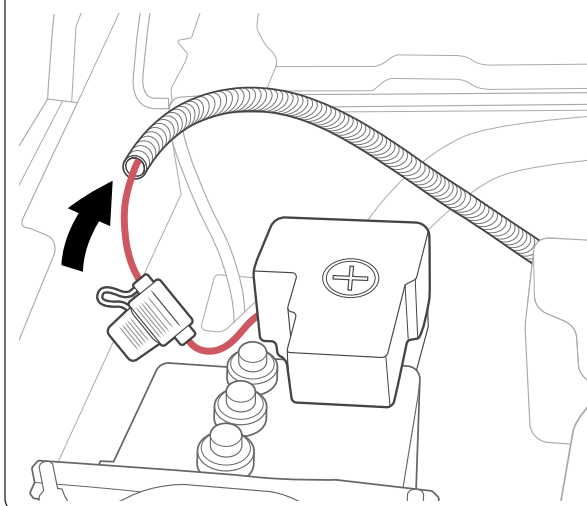
C. Solder Fuse Holder to Power wire and Ring.



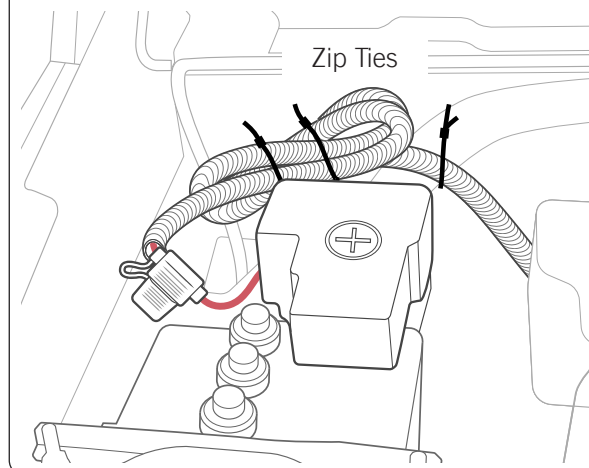
D. Fasten ring to POSITIVE terminal.



E. Push excess wire into loom.

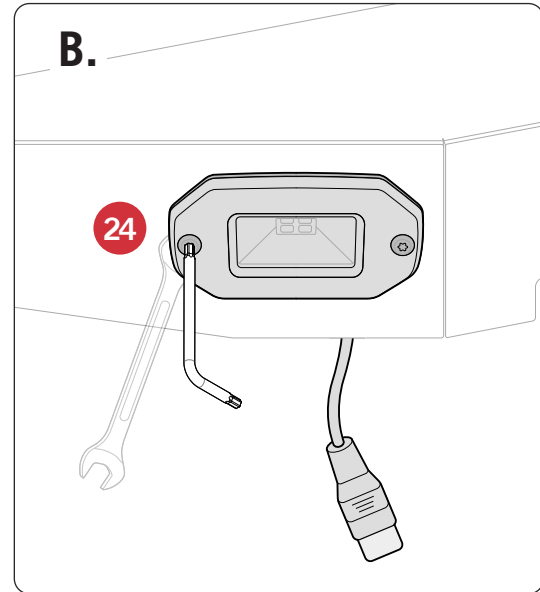
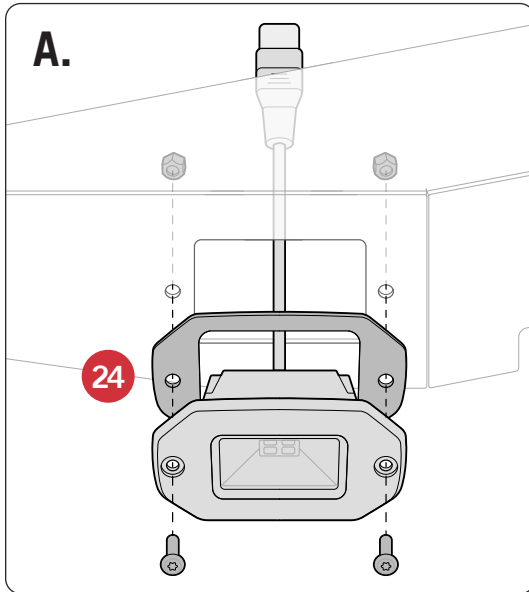
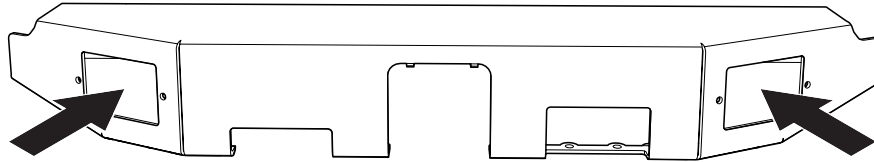


F. Zip-tie remaining wire to a secure location clear of sharp edges and heat.

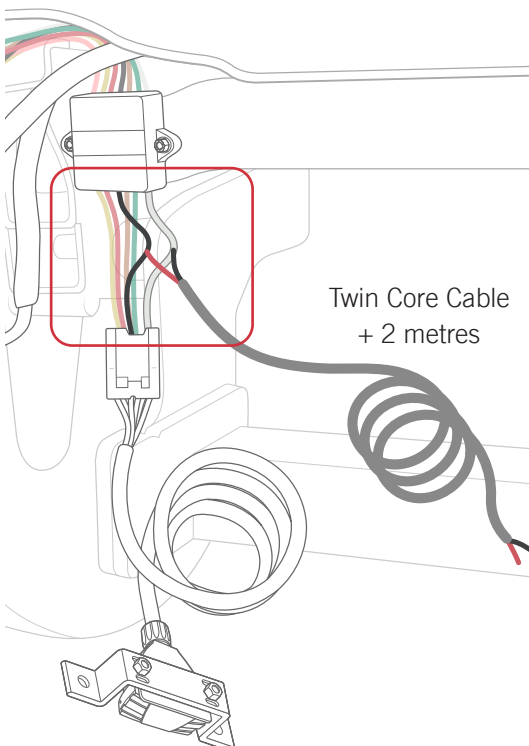


FITTING REVERSE LED LIGHTS

STEP 23

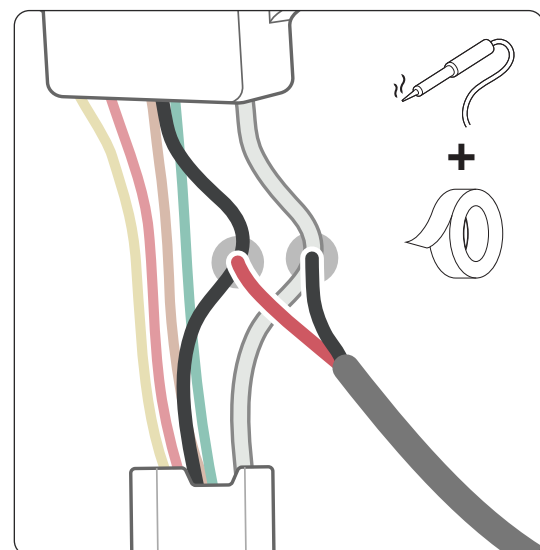


STEP 24



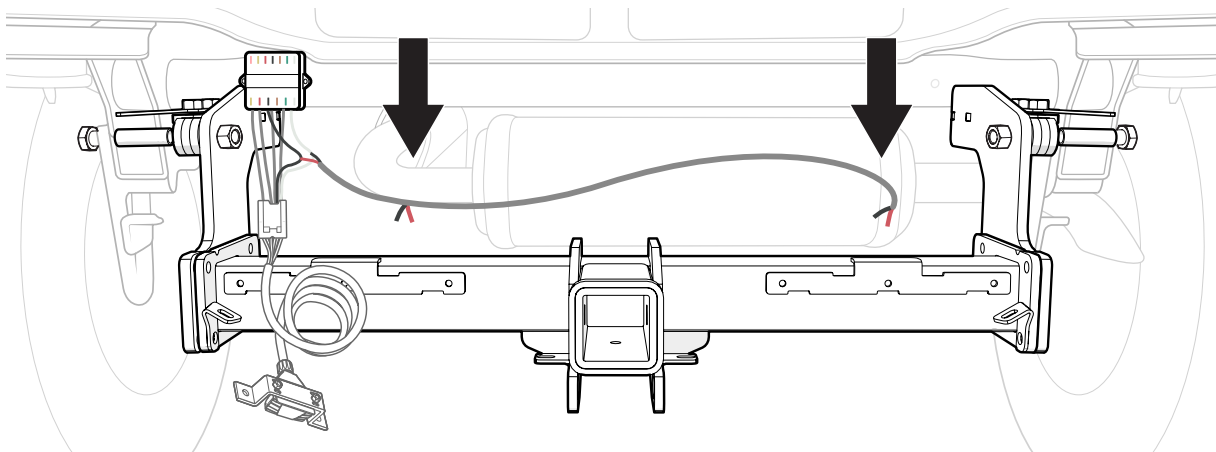
Solder ECU wires to Twin Core Cable as follows:

ECU	Wire
BLACK	> RED (Reverse Lights)
WHITE	> BLACK (Earth)



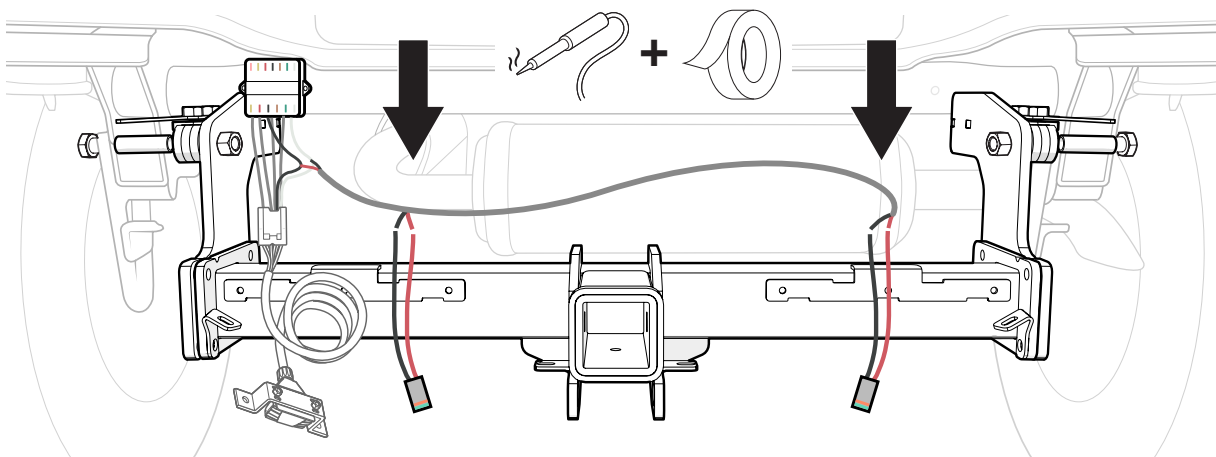
STEP 25

Strip Wires where Reverse Lights will be located.



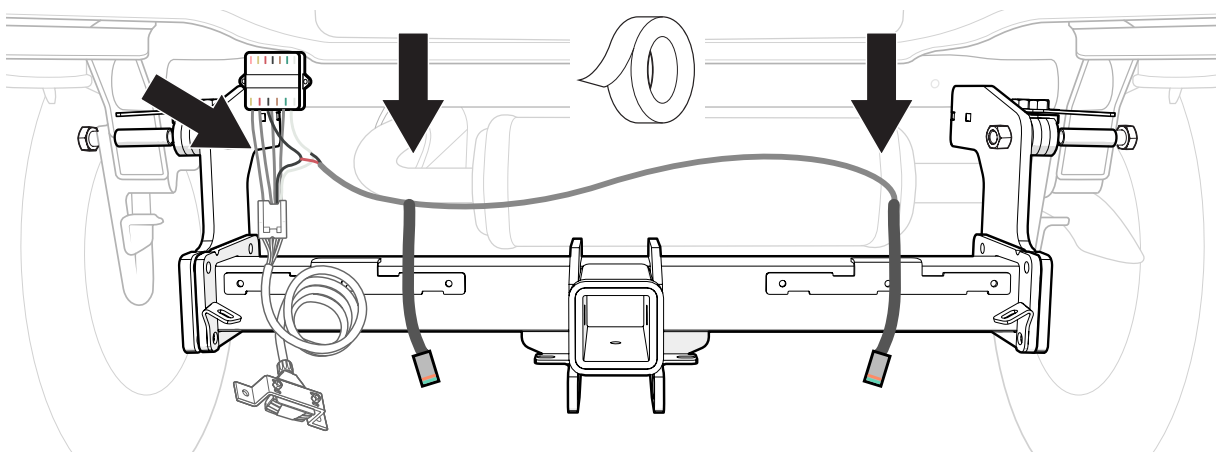
STEP 26

Solder Reverse Light connectors.



STEP 26

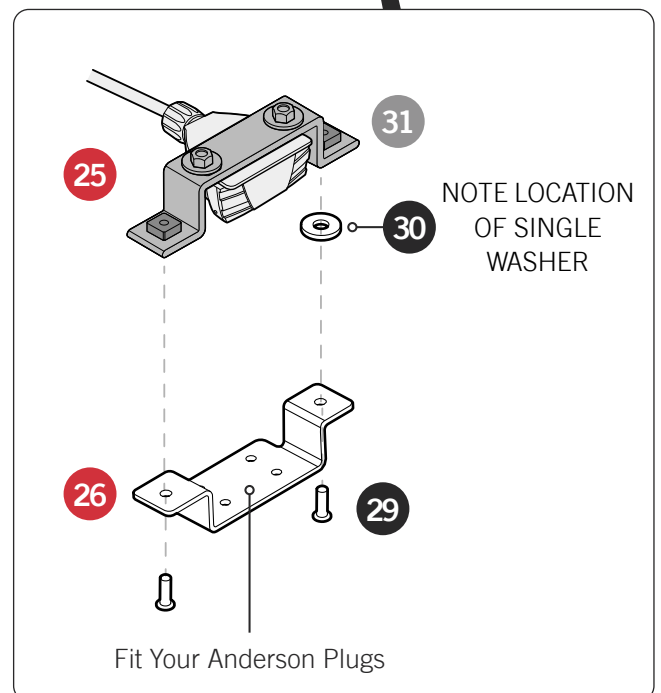
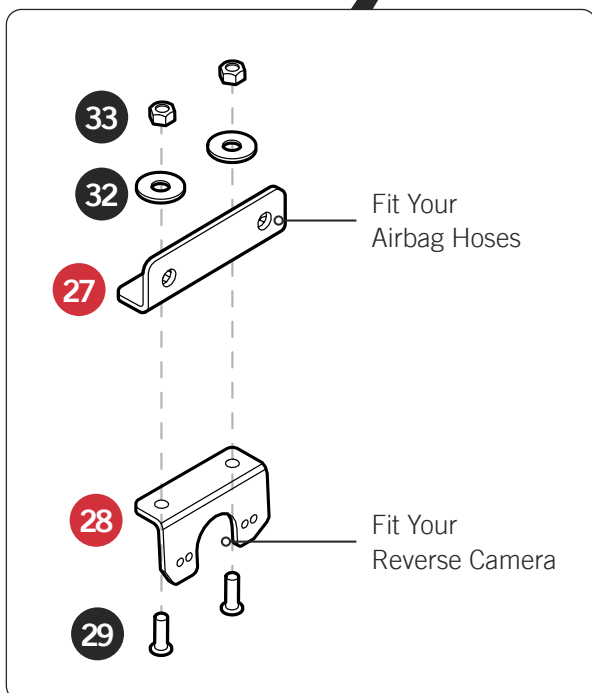
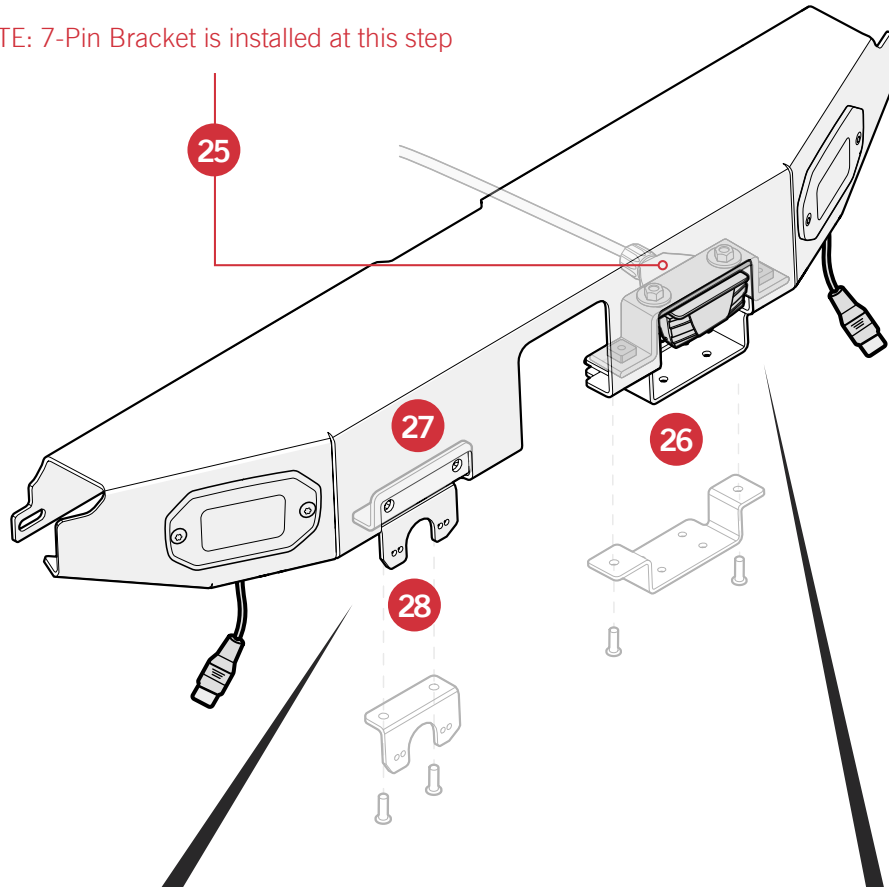
Wrap loose wire and soldered connections with electrical tape.



FITTING ANDERSON PLUG, TRAILER REVERSE CAMERA & AIRBAG BRACKETS

STEP 27

NOTE: 7-Pin Bracket is installed at this step



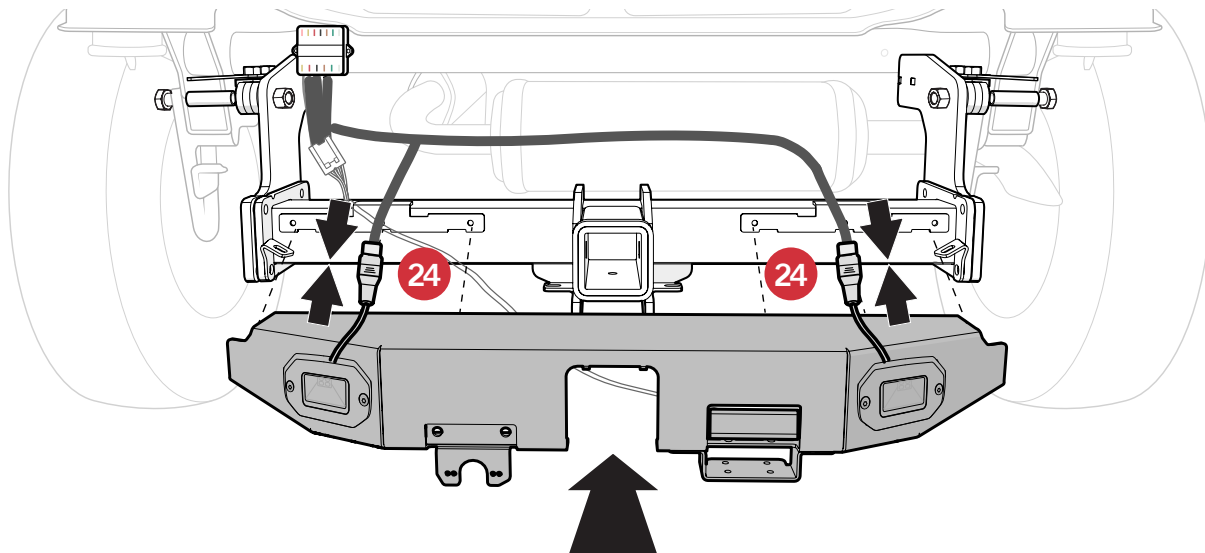
FINALISE FITMENT

STEP 28

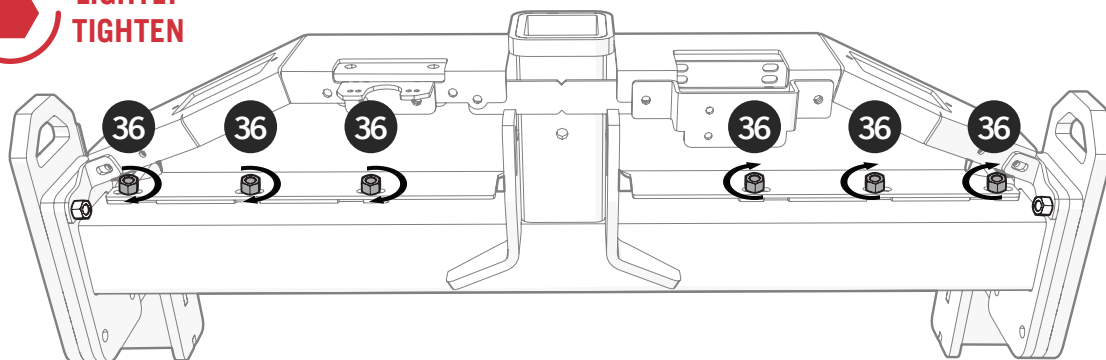
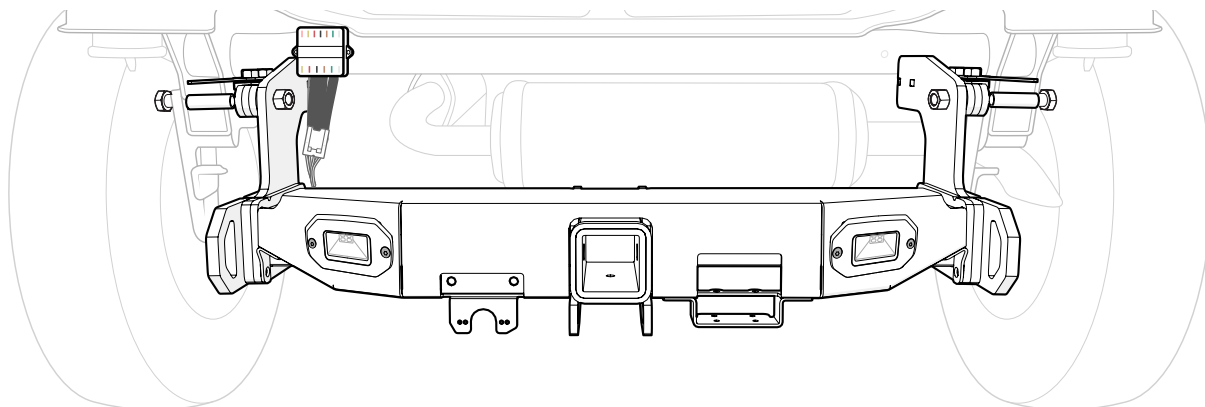
Connect both Reverse Light Plugs.

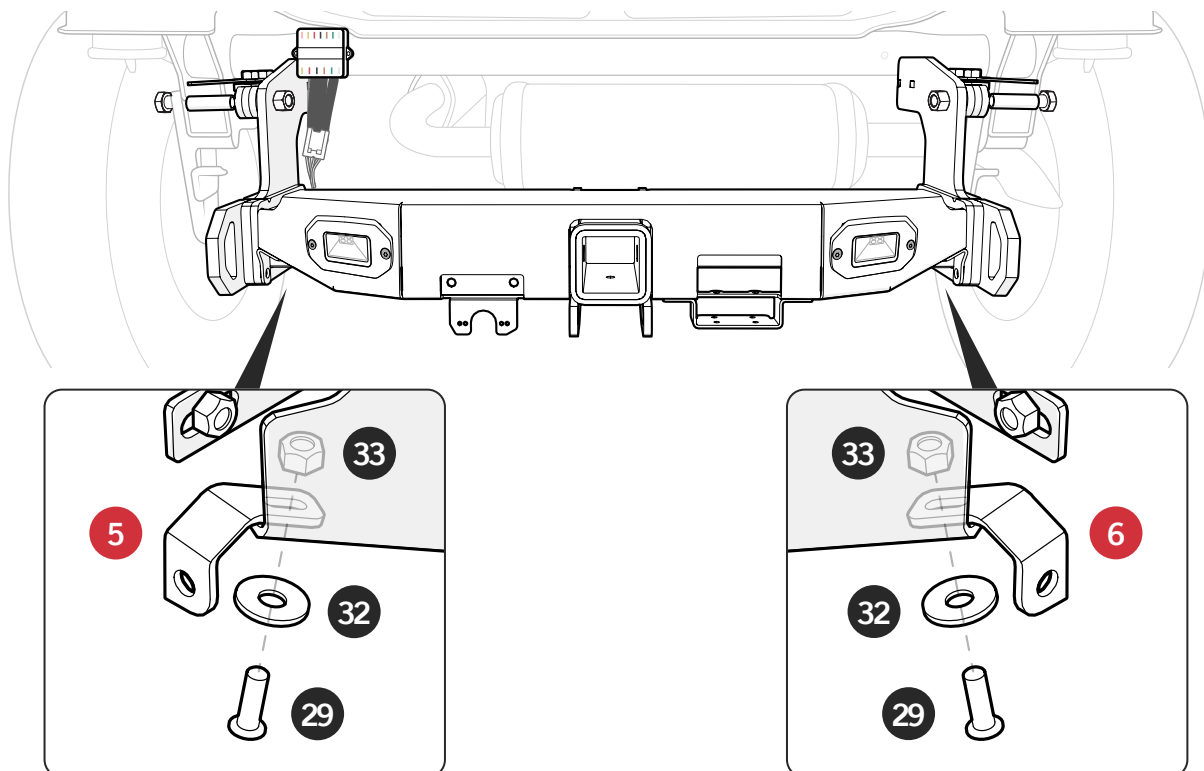
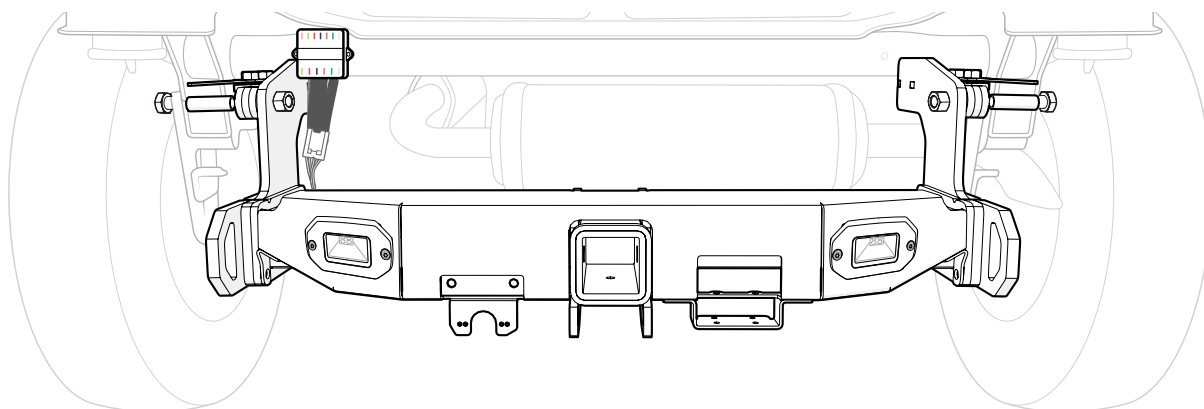
Position Dress Plate Step in line with x6 Chassis Bracket holes and x2 Dress Plate Bracket holes.

NOTE: SECURE ALL EXCESS WIRES TO THE TOWBAR OR VEHICLE BODY WITH ZIP-TIES.



STEP 29



**STEP
30****STEP
31**

 **M12: 110-160NM**

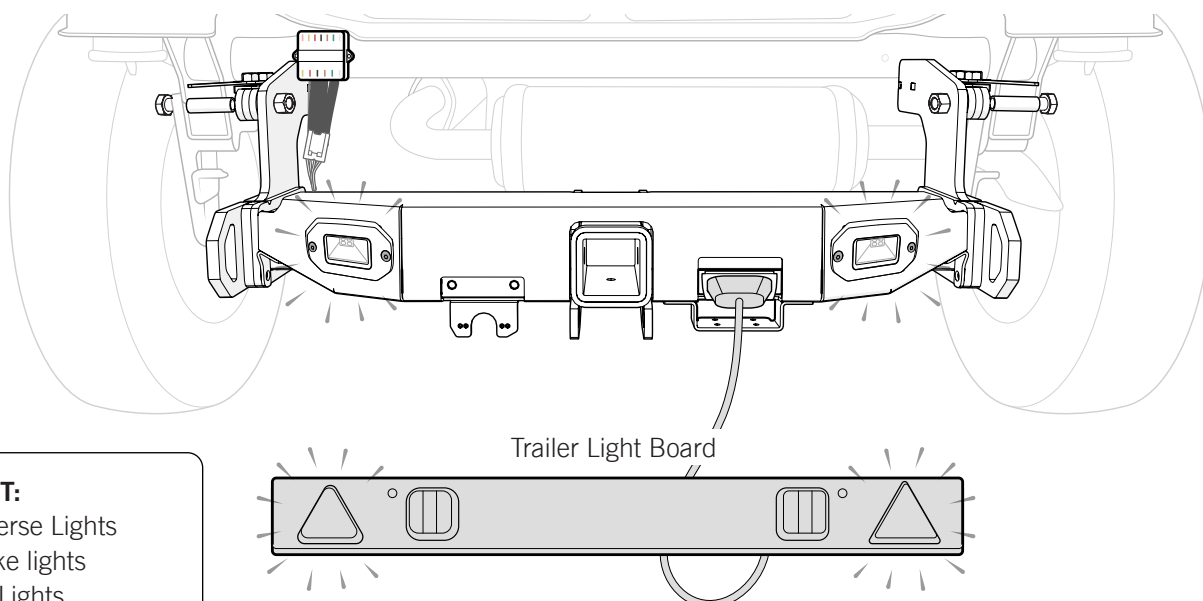
 **M10: 70-90NM**

 **M6: 12-15NM**

 **M4: 3-4NM**

STEP 32

Ensure electrical connections are functional.



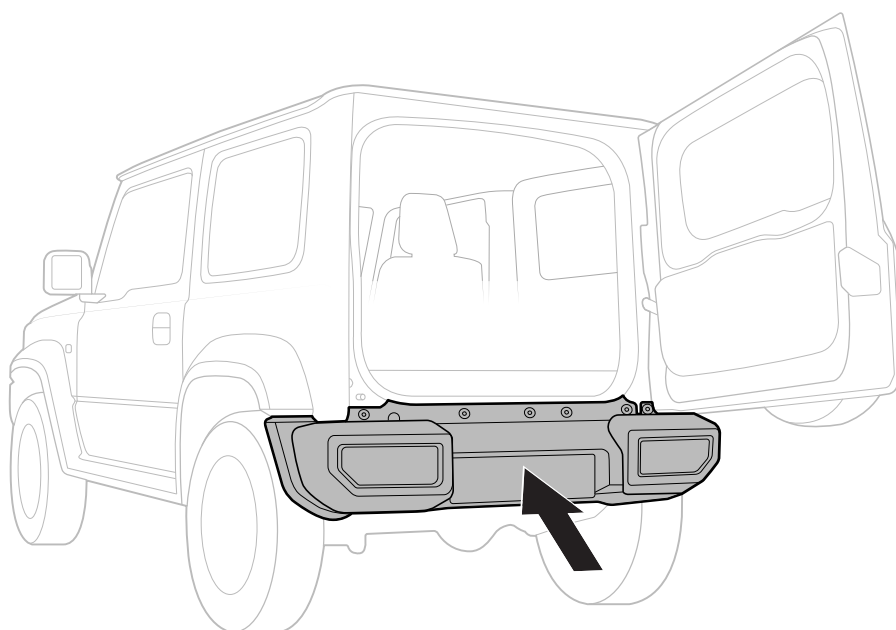
TEST:

Reverse Lights
Brake lights
Tail Lights
Left/Right Indicators

STEP 32

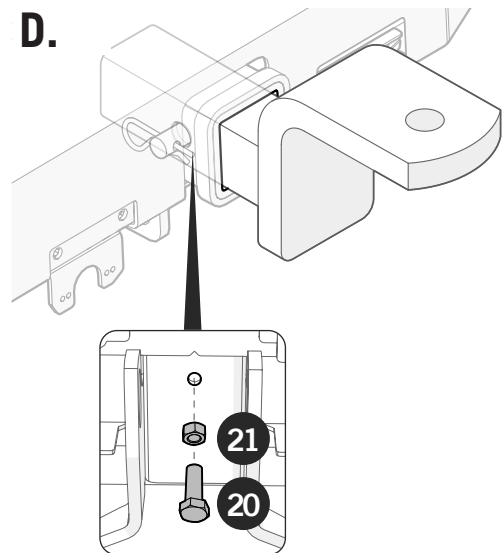
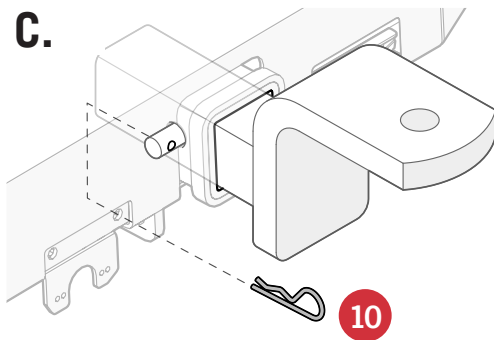
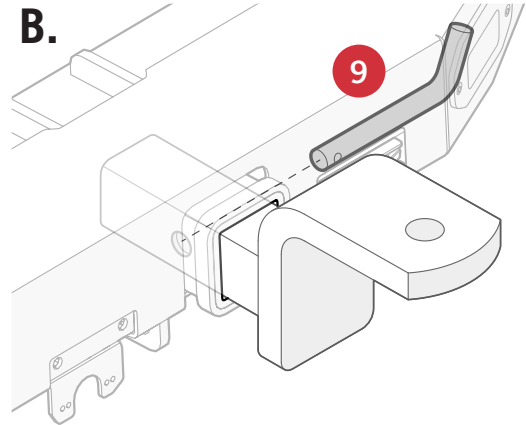
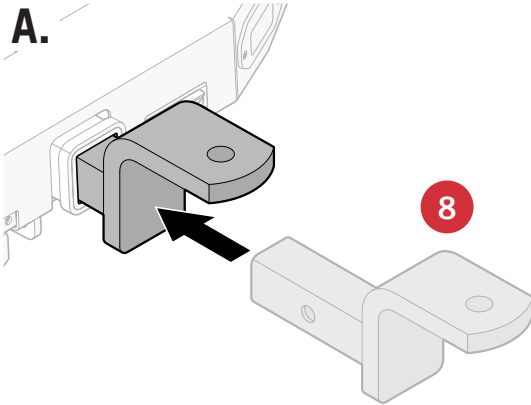
COMPLETE STEPS 01 TO 06 IN REVERSE ORDER.

Reinstall all factory components and hardware to vehicle manufacturer's specifications.

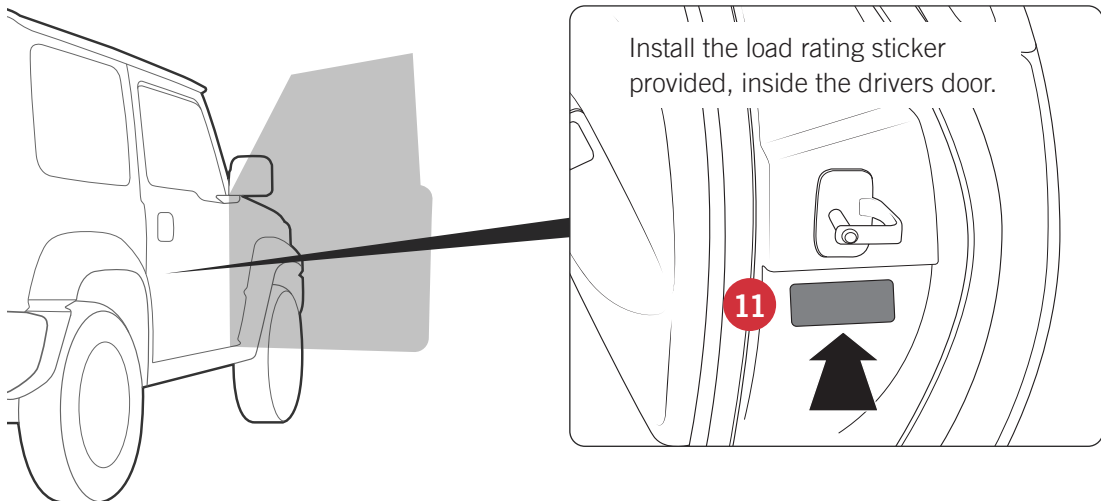


TOWBALL USAGE

STEP 32



STEP 33





We're here to help

Want to chat? Call **1800 869 227**
or email **hello@carasel.com.au**

Learn more about us at
carasel.com.au



**100% AUSTRALIAN
MADE AND OWNED**



**DRIVE AWAY
LIFETIME WARRANTY**



**MANUFACTURED TO
AUSTRALIAN STANDARD**