



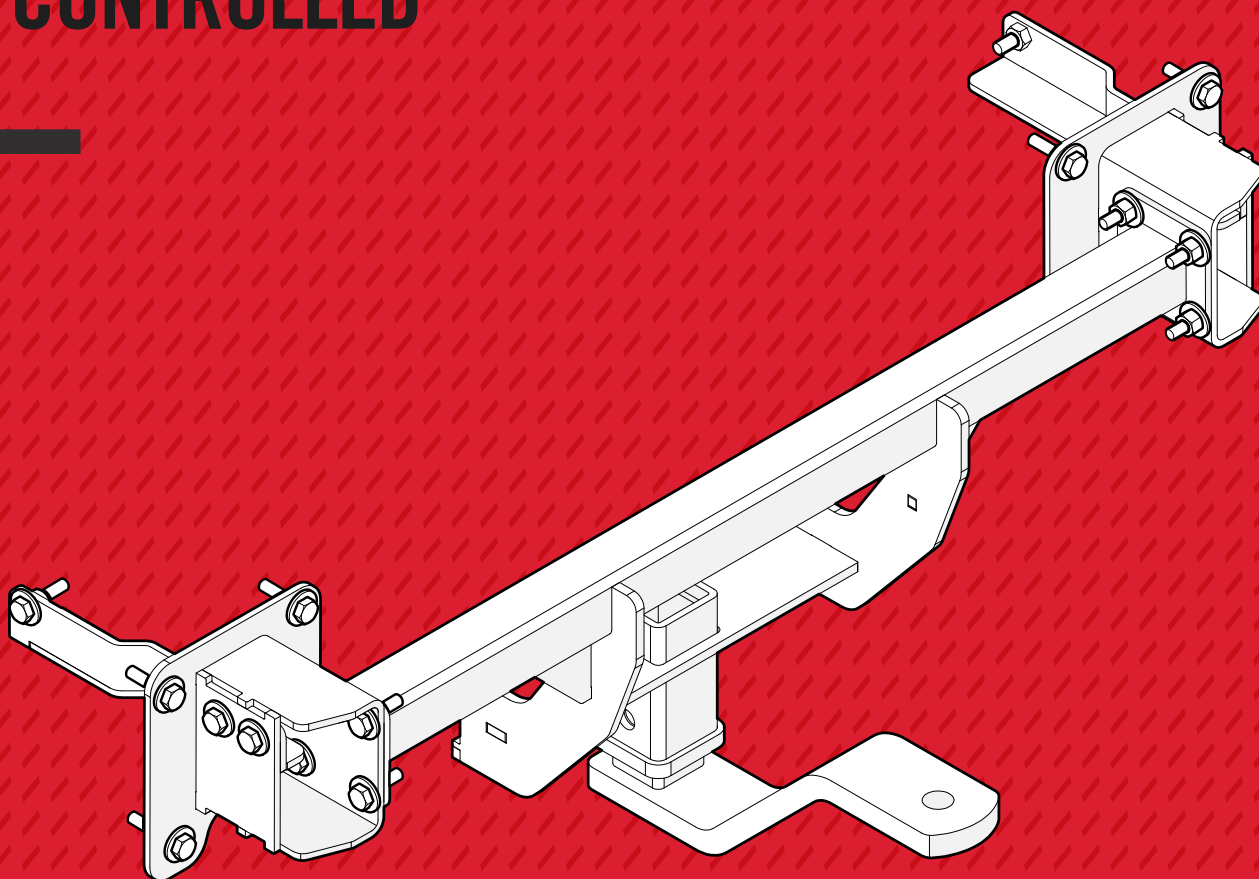
EST 1956
CARASEL®

**FITTING
INSTRUCTIONS**

MG4 EV

P/N – MG4G2

CONTROLLED



ISSUE #: 02

ISSUE DATE: 08/07/24

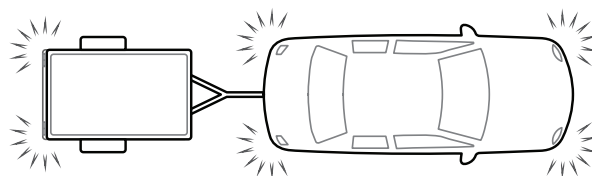
CONTENTS

2	IMPORTANT INFORMATION
4	PARTS LIST
5	VEHICLE PREPARATION
7	TOWBAR INSTALLATION
10	WIRING STEPS
14	FINALISE FITMENT
15	TOWBALL USAGE

IMPORTANT INFORMATION

- CHECK THE MAXIMUM TOWING CAPACITY OF YOUR VEHICLE AS STATED BY THE VEHICLE MANUFACTURER.
- DO NOT EXCEED THE MAXIMUM TOWING CAPACITY OF YOUR VEHICLE OR OF THIS TOWBAR. COMPLY WITH THE LOWEST OF THESE TWO VALUES.
- THIS PRODUCT IS FOR TOWING PURPOSES ONLY AND MUST ONLY BE LOADED AS STATED IN YOUR VEHICLE OWNER'S MANUAL.

CHECK:



Note: Tail lights remain on when vehicle is running. This is a safety feature of BYD.

0km



Torque hardware

+1000km



Re-torque hardware

+1000km



Re-torque hardware

+1000km









GENERAL:

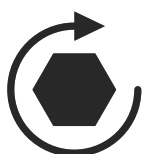
- Read these instructions thoroughly and check all components are correct before installation.
- These instructions must be followed for warranty to be upheld.
- Check that the towbar is suitable for the vehicle and be wary of any aftermarket changes to the vehicle design that may conflict with the fitting of this towbar. (Tray, Canopy, Suspension etc.)
- Load ratings specified are under the assumption that your trailer has suitable braking systems for its weight.
- After installation is completed, store these instructions in the vehicle's glovebox with vehicle's manual.
- When towing a load behind your vehicle, the handling characteristics of your vehicle will be affected. Be cautious when cornering, braking and accelerating, especially when towing wind-resistant loads, and when travelling in off-road conditions.

WARNING:

- Always inspect towbar and towbar accessories before use.
- Do not use towbar if any signs of damage, rust corrosion or fractures are present.
- Do not alter or modify this towbar in any way.
- Do not install / use towbar if there is any damage near the towbar mounting area, or if your vehicle is involved in a collision.
- If vehicle drilling is required, check behind chassis rail and body panels before drilling to ensure no hazards are present. After drilling, remove swarf and treat exposed metal with a rust inhibitor.
- Ensure that your vehicle is on level ground and securely parked before beginning installation / maintenance work.
- Always wear appropriate protective gear before beginning installation / maintenance work.    

TOWBAR MAINTENANCE AND CARE:

- Regularly inspect all bolted connections, ensuring they are torqued to the specifications below and are in good condition.
- Clean tow ball and hitch with brake cleaner to avoid abrasion.
- When not in use, store the Tow Ball Mount assembly and CLASS 4 Pin and Clip inside the car away from moisture.
- Before driving with a trailer, attach the trailer to the towbar and check that all electrical wiring is fully functional.



TIGHTEN BOLTED CONNECTIONS TO THE FOLLOWING TORQUE SETTINGS,
UNLESS OTHERWISE SPECIFIED IN INSTRUCTION STEPS:

M16: 210 - 240 Nm

M12: 100 - 120 Nm

M6: 12 - 15 Nm

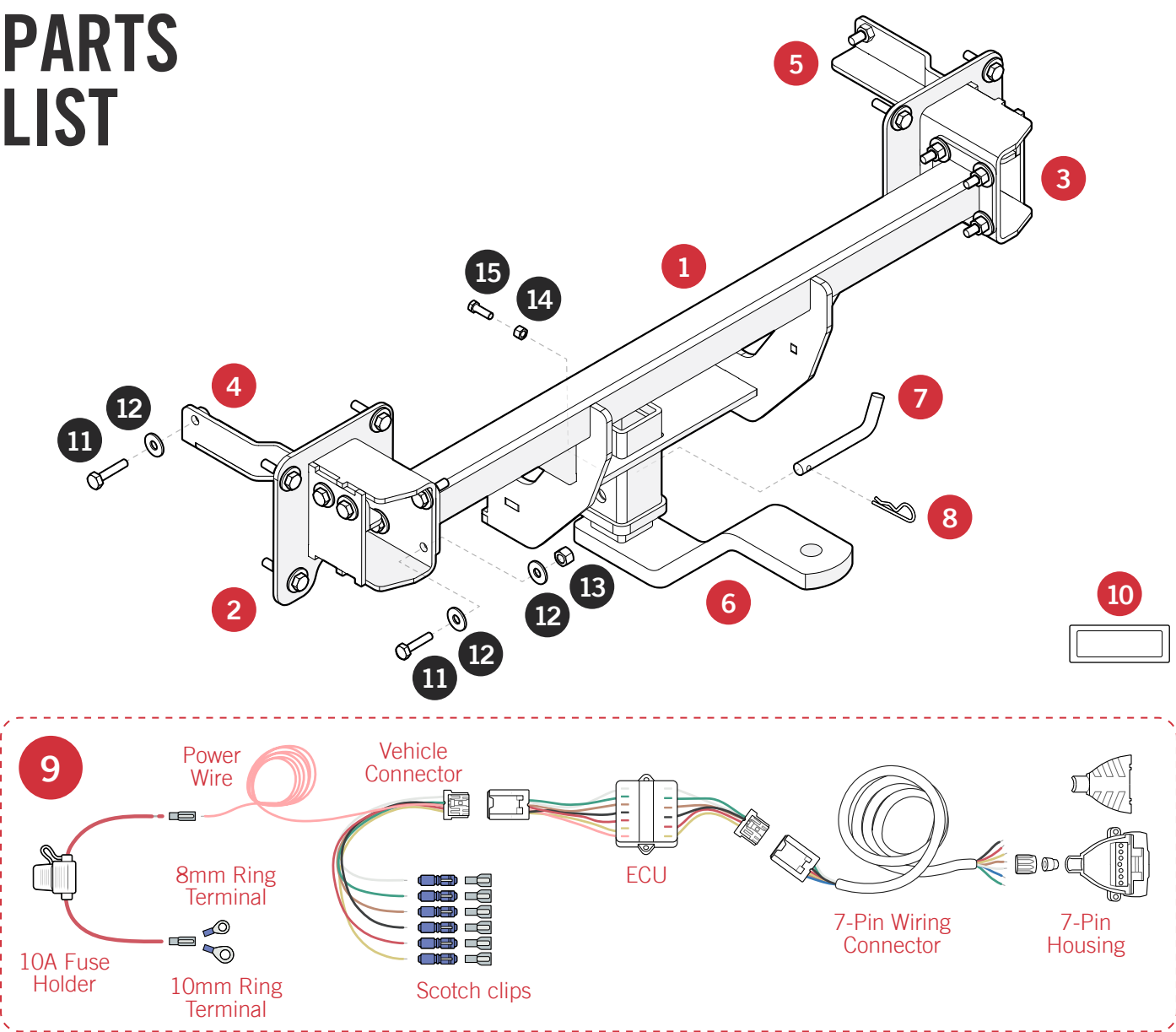
M14: 150 - 170 Nm

M10: 60 - 70 Nm

M4: 4 - 5 Nm

These fitting instructions are the property of Carasel Pty. Ltd. and may not be altered for any other purpose than intended.

PARTS LIST



#	PART	QTY
1	CROSS-BEAM	x1
2	LEFT CORNER BRACKET	x1
3	RIGHT CORNER BRACKET	x1
4	LEFT FACE PLATE	x1
5	RIGHT FACE PLATE	x1
6	TOWBAR HITCH	x1
7	PIN	x1
8	R-CLIP	x1
9	TOWBAR BYPASS KIT	x1
10	LOAD RATING STICKER	x1

#	HARDWARE	QTY
11	M10 x 35mm BOLT	x20
12	M10 FLAT WASHER	x32
13	M10 NUT	x12
14	3/8" ANTI RATTLE BOLT	x1
15	3/8" NUT	x1

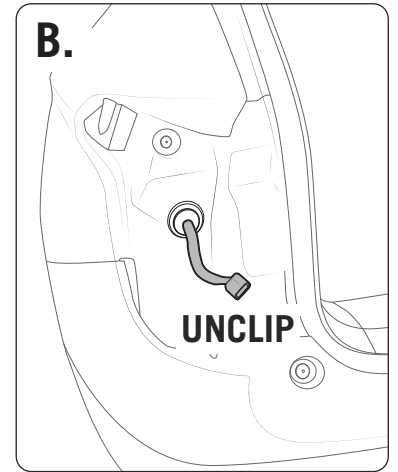
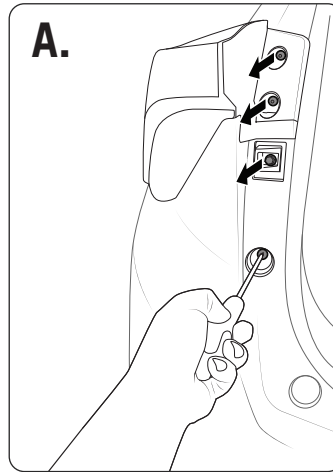
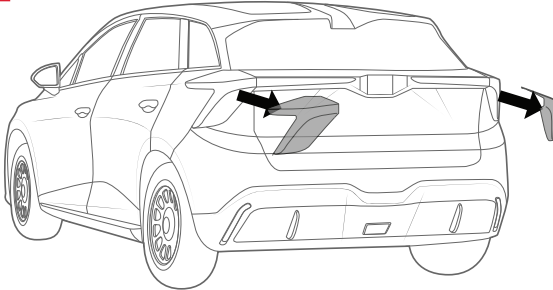
TOOLS REQUIRED



- Phillips Head Screwdriver
- Trim Removal Tools
- Impact Wrench
- 17mm Socket Wrench
- Torque Wrench
- 1/2" Socket Wrench
- Cutting Tool (Dremel)
- Safety Knife
- Soldering Iron
- Electrical Tape
- Electrical Wire 1.5mm (7 meters)
- Split Wire Loom (5+ meters)
- Zip ties

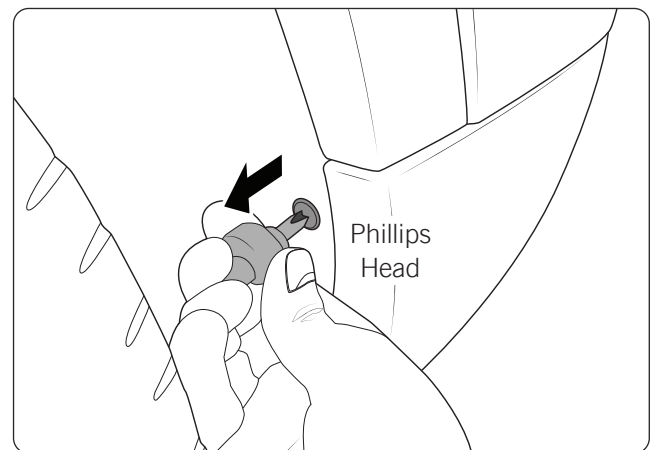
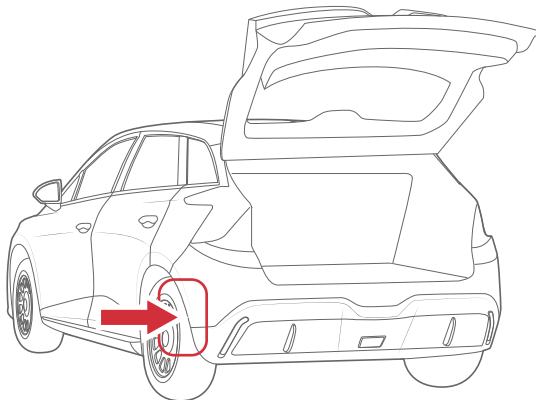
VEHICLE PREPARATION

STEP 01

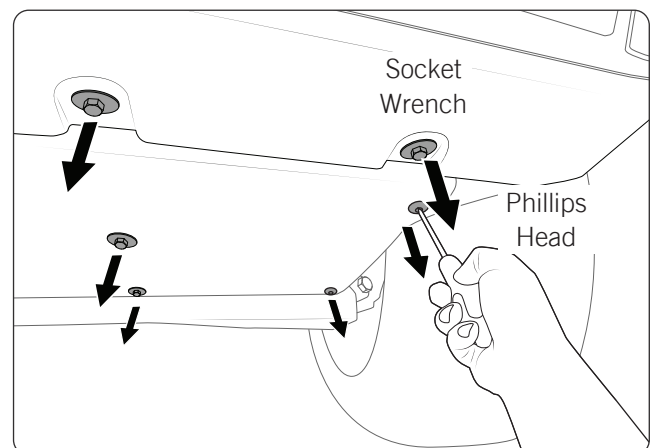
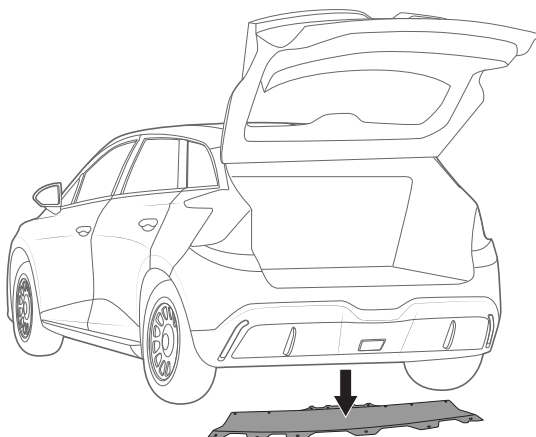


Trim tools can be used to assist.

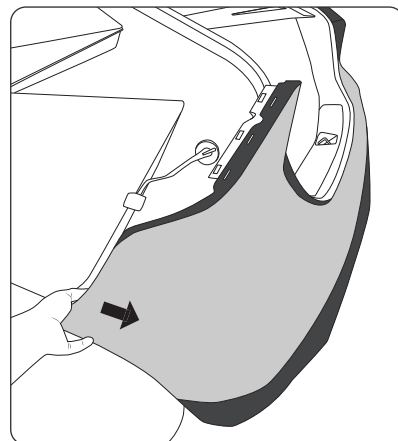
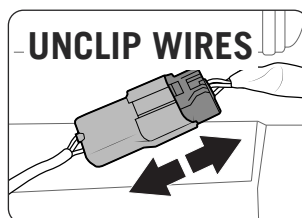
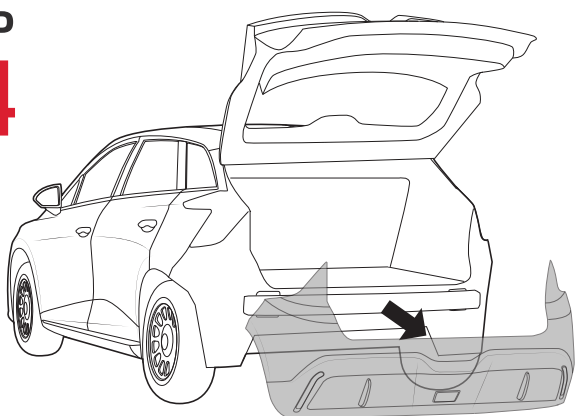
STEP 02



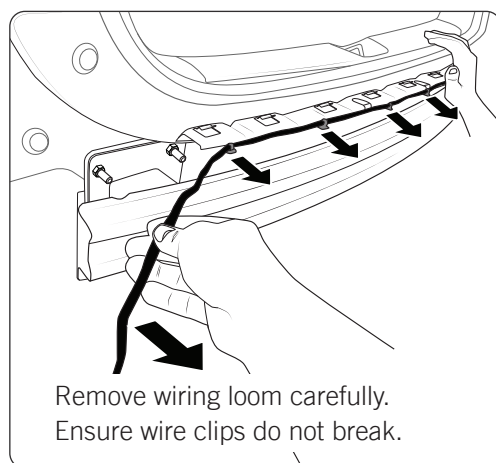
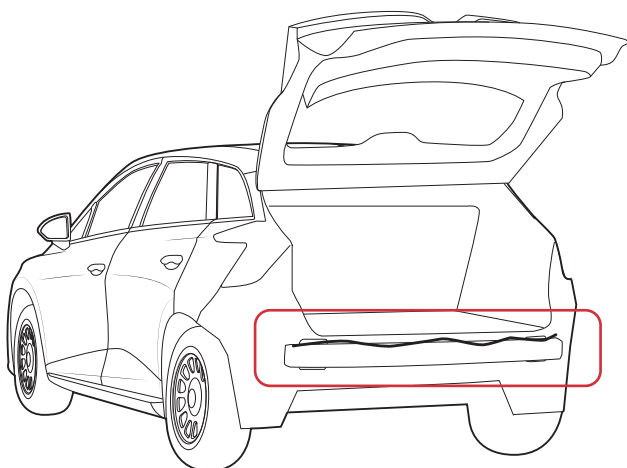
STEP 03



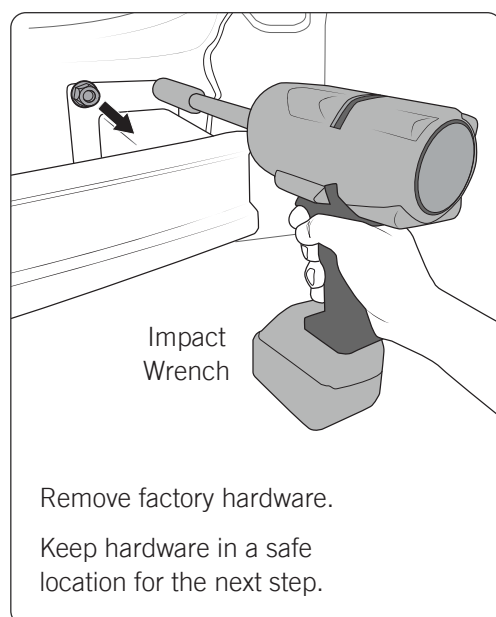
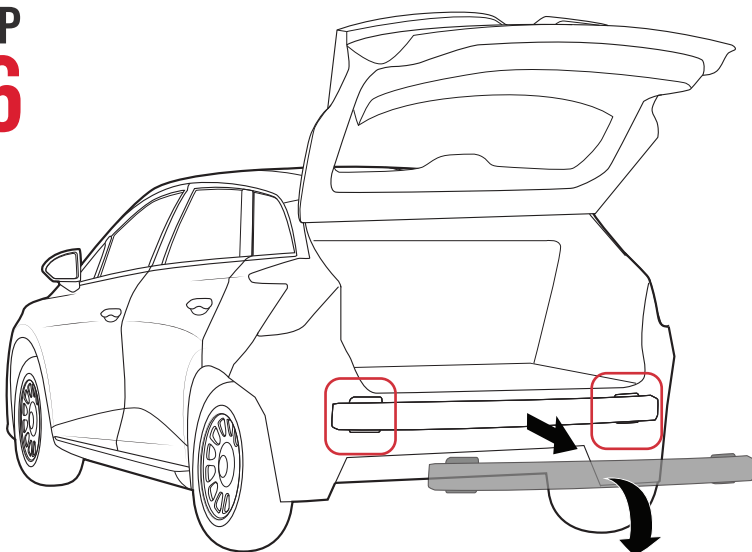
STEP 04



STEP 05



STEP 06

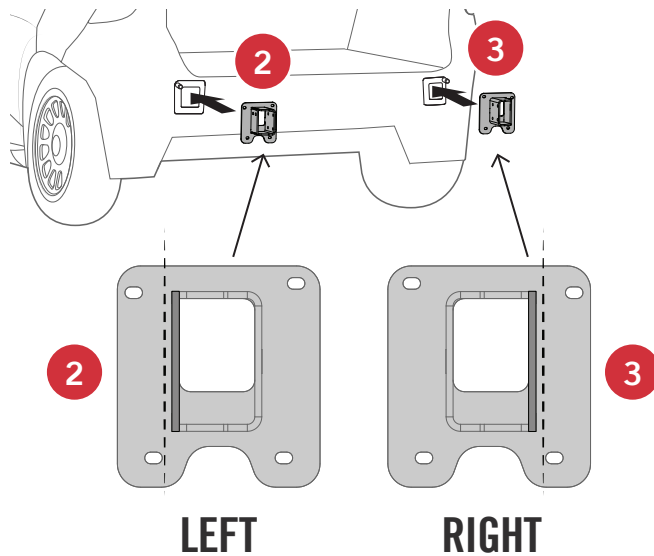


Remove & Discard 
(Towbar will replace this item)

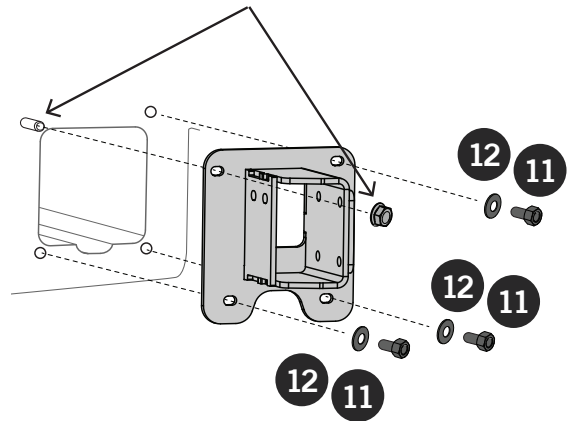


TOWBAR INSTALLATION

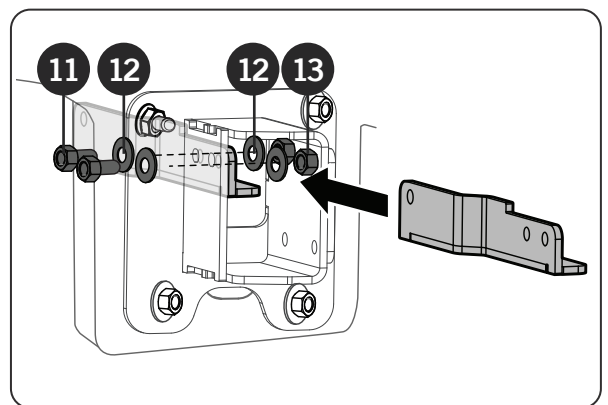
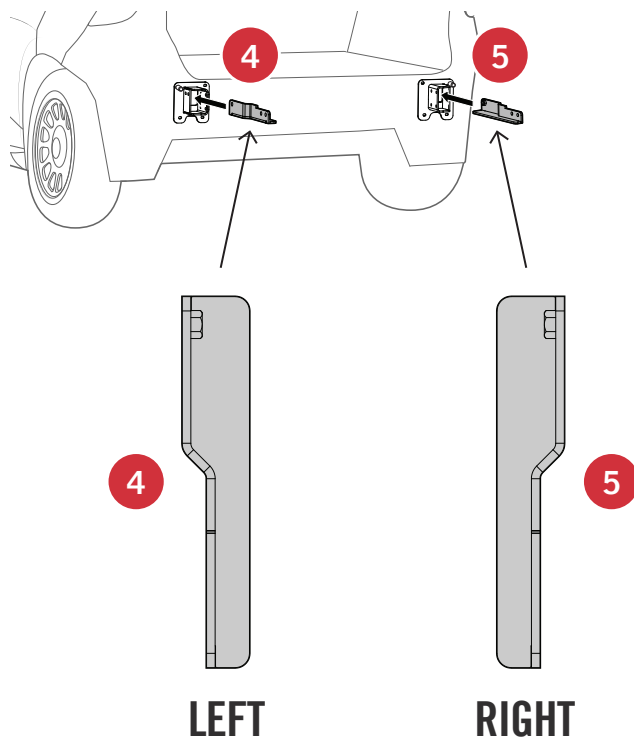
STEP 07



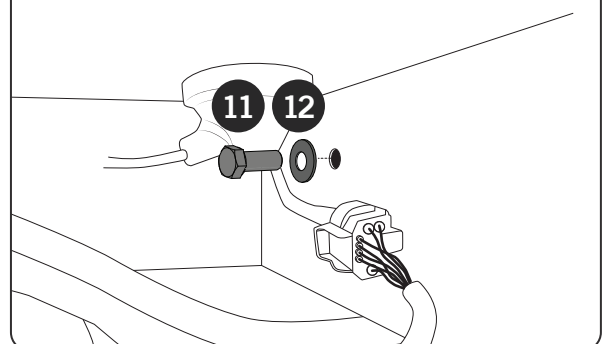
Install the original Factory Hardware from **STEP 06** over the stud.



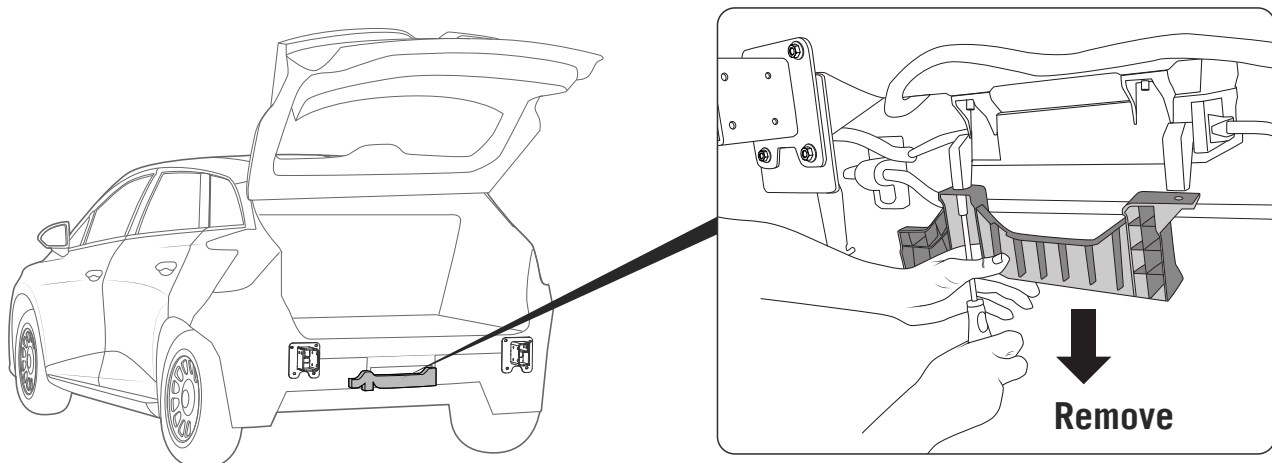
STEP 08



VIEW FROM UNDER THE VEHICLE:

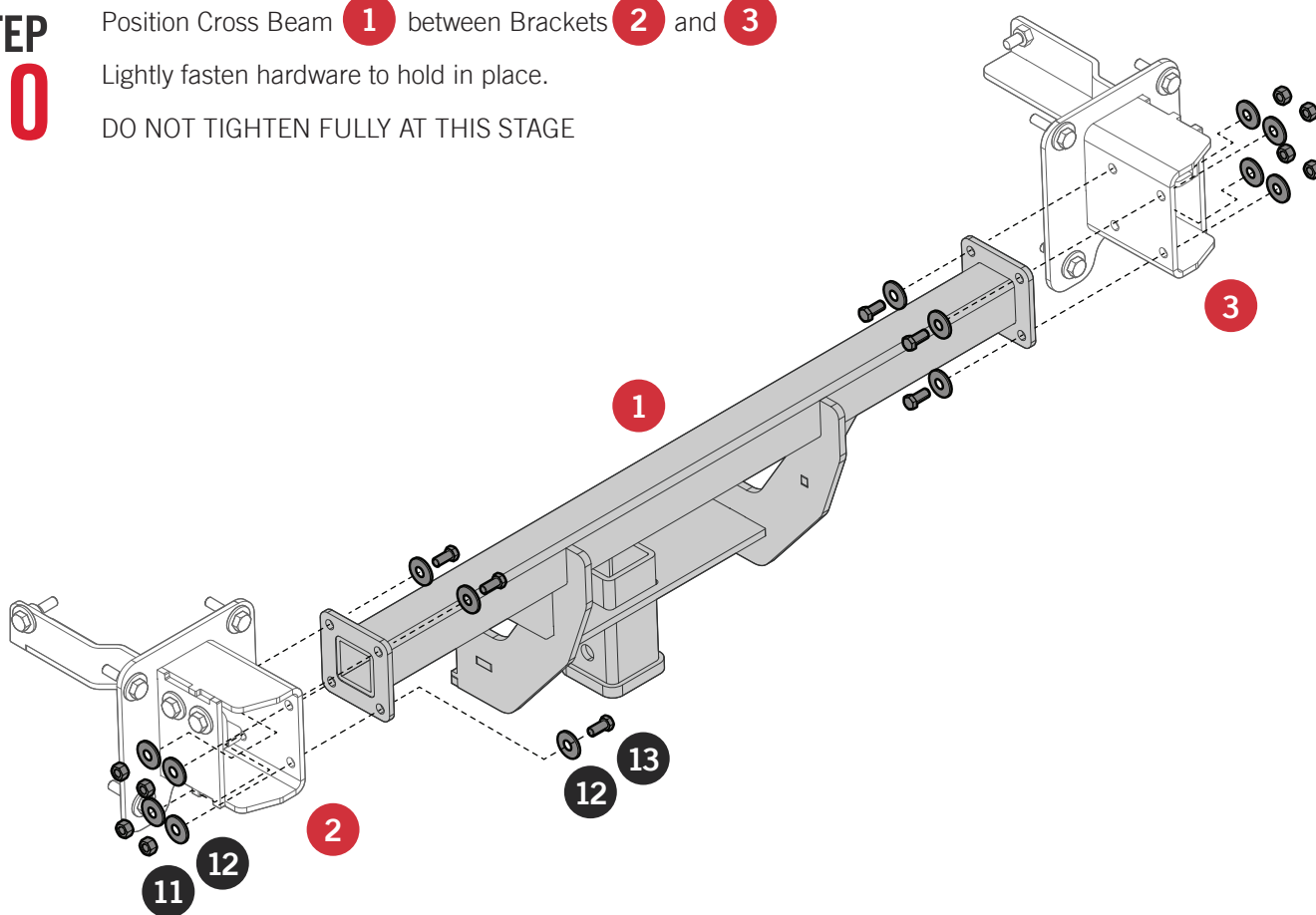


STEP 09



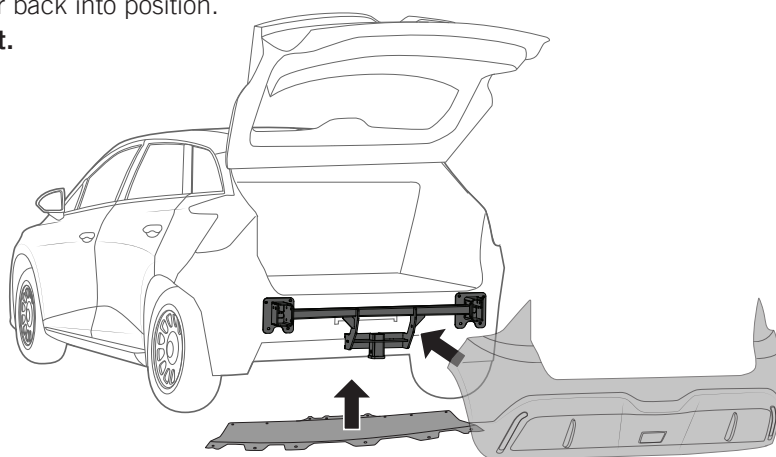
STEP 10

Position Cross Beam **1** between Brackets **2** and **3**
 Lightly fasten hardware to hold in place.
 DO NOT TIGHTEN FULLY AT THIS STAGE

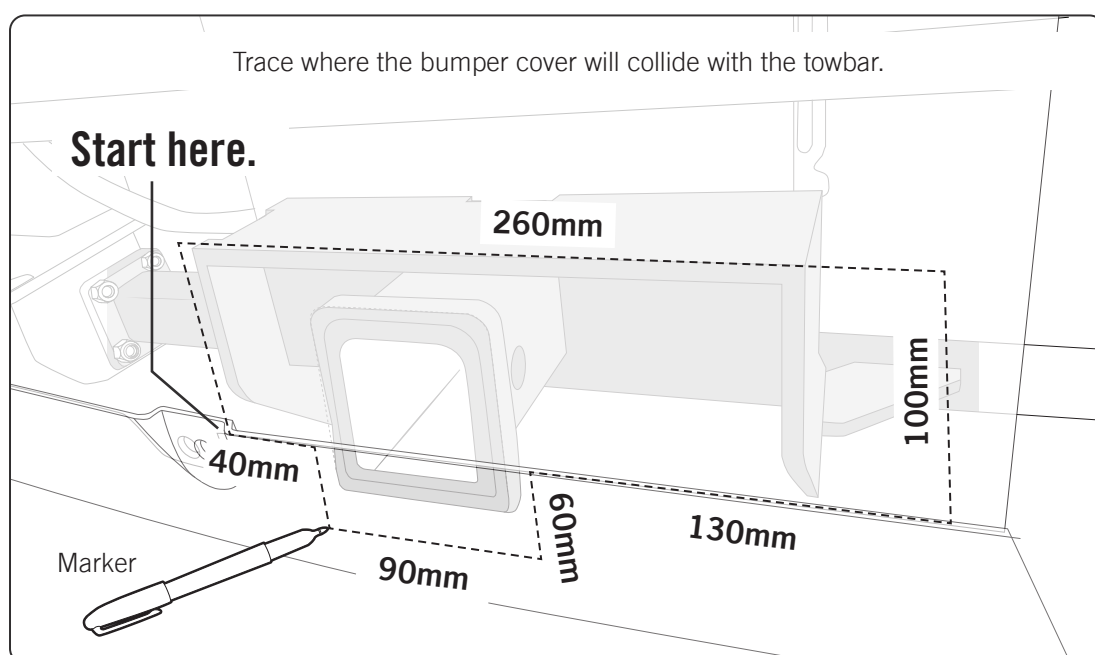
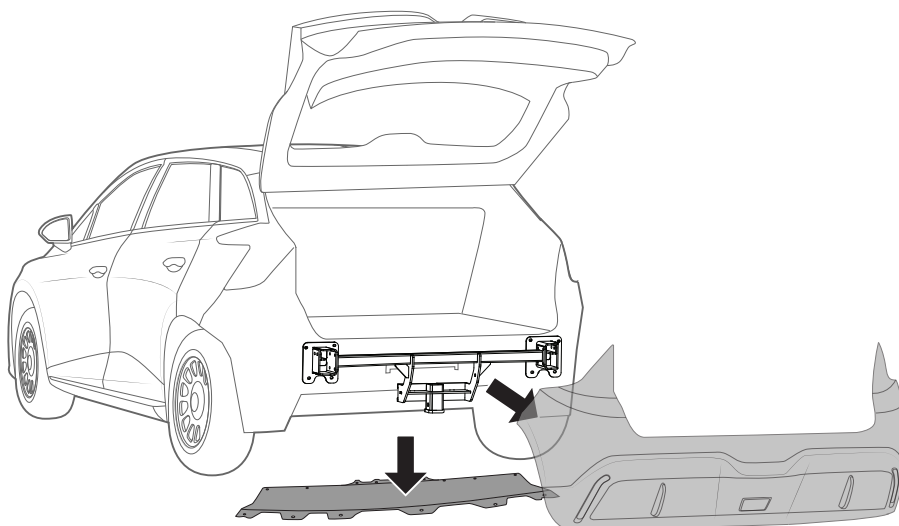


**STEP
11**

Place the rear bumper back into position.
Do not fix in place yet.

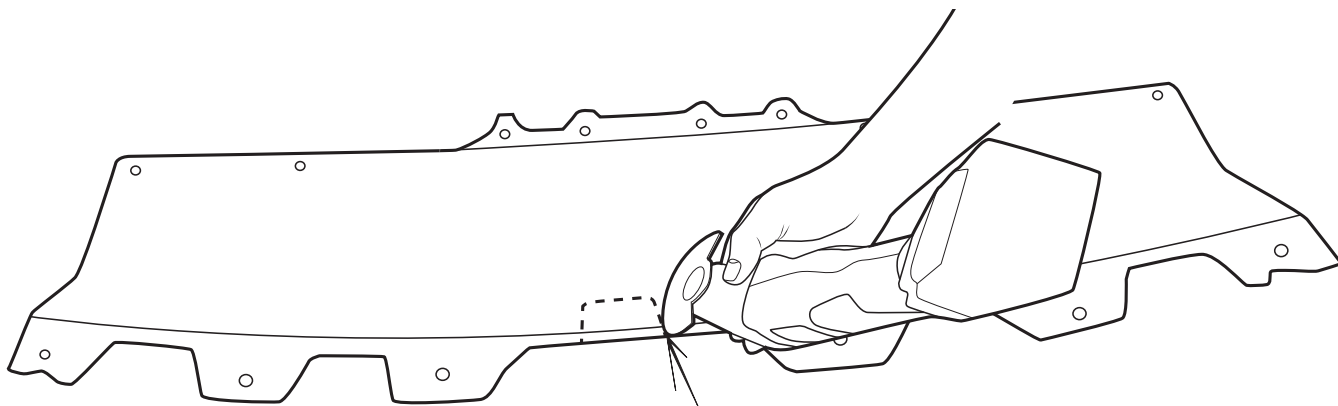


Trace where the bumper cover will collide with the towbar.

**STEP
12**

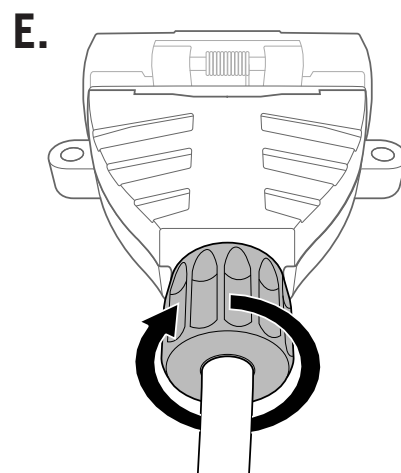
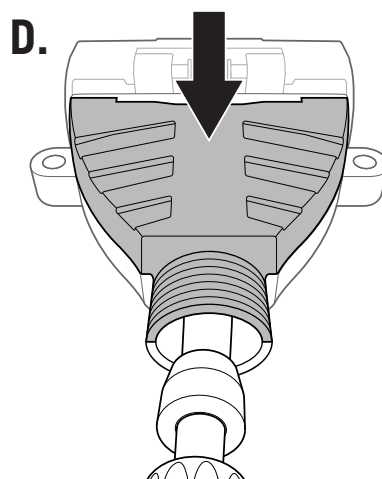
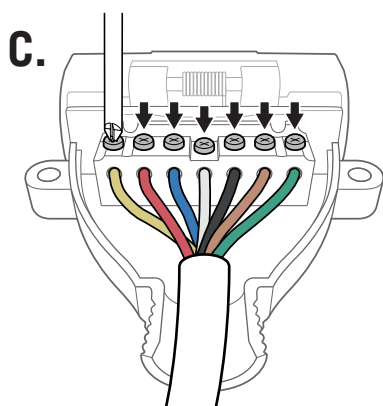
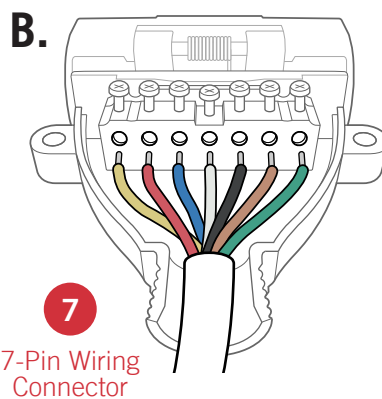
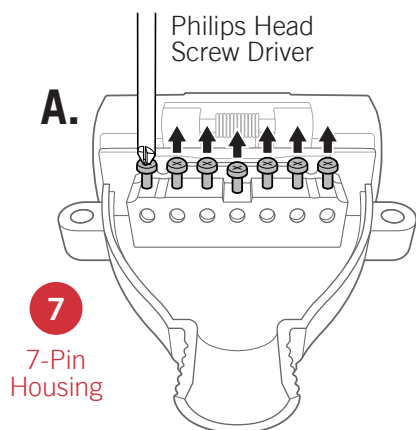
STEP 13

Carefully cut the bumper and plastic panelling marked in **STEP 11**.



GENERAL WIRING STEPS

STEP 14

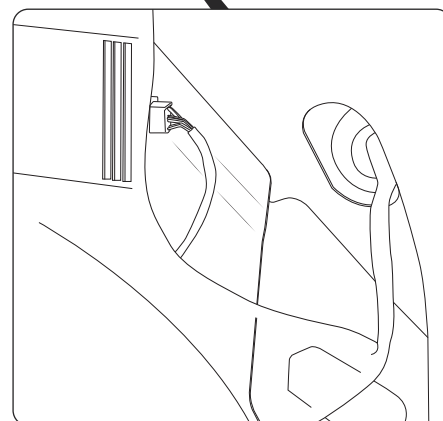
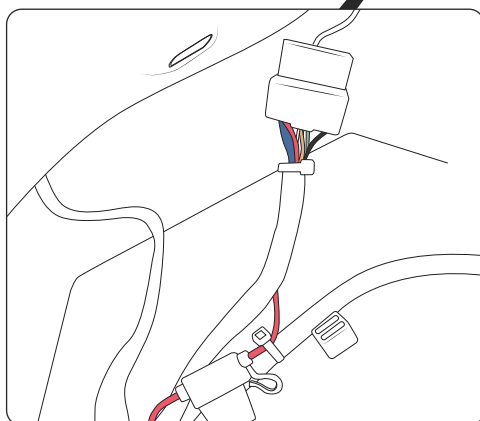
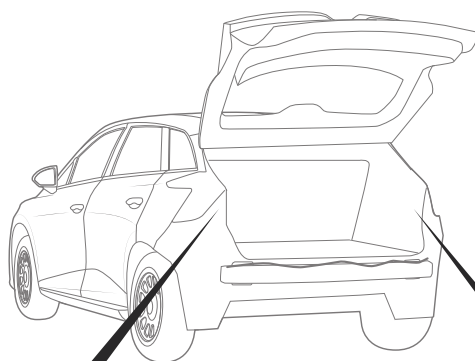




STEP 15

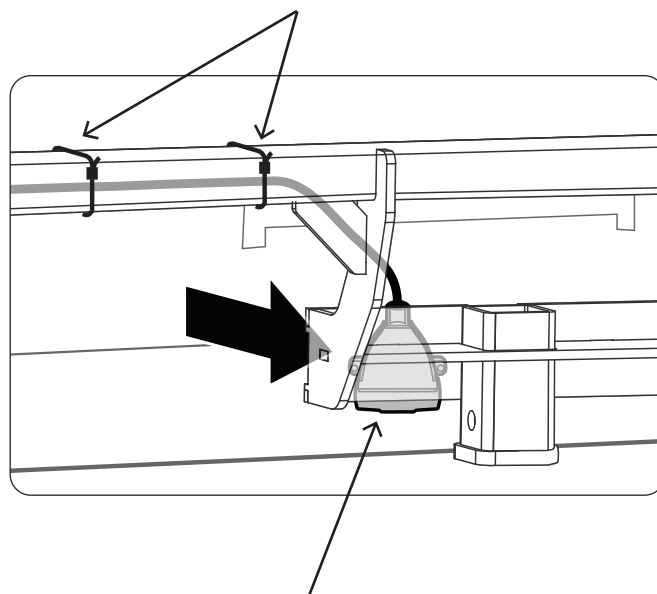
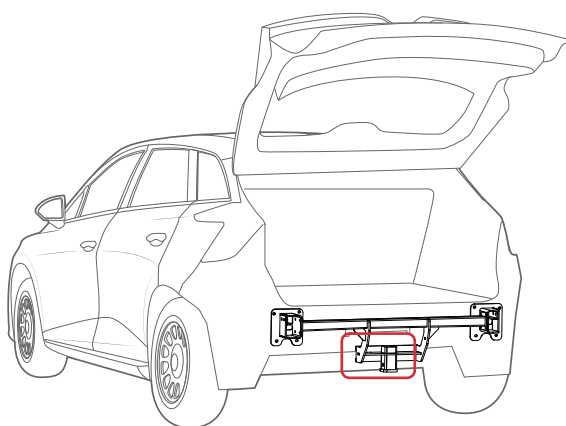
Connect the towbar wiring to the vehicle.
Splice to the tail light harnesses.

TOWBAR	TAIL LIGHT
Stop -	White / Blue
Tail -	White
Left -	White / Yellow
Earth -	Black



STEP 16

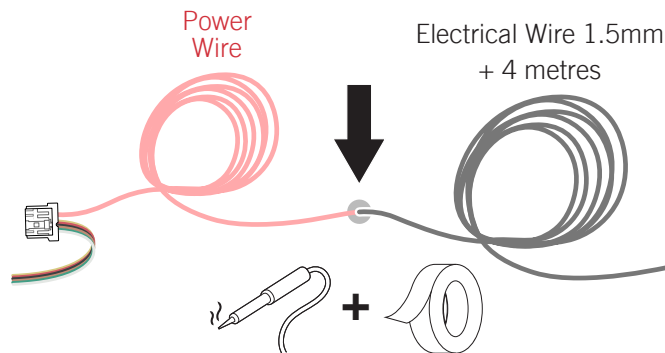
IMPORTANT: Zip-tie excess wire to the towbar / vehicle body. Avoid sharp edges and areas with heat.



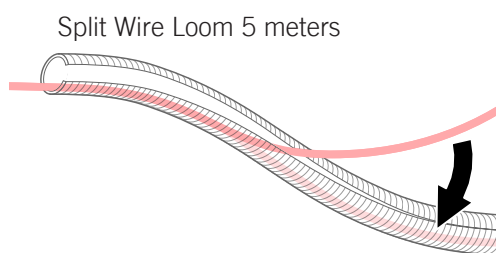
Attach 7-Pin Wire to Crossbar
using M4 Hardware.

STEP 17

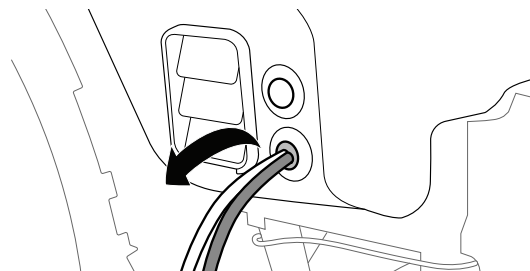
- A.** Lengthen the **Pink** wire so it will reach the battery terminal. Extend by an additional 3 metres.
Solder and tape connection.



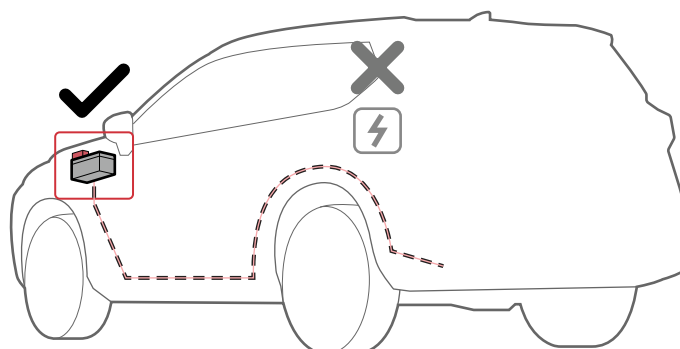
- B.** Insert ALL wire into Split Wire Loom. Trim the Split Wire Loom to match length of wire.



- C.** Feed Wiring out through LHS Grommet and to the underside of the vehicle.



- D.** Route wire with Split Wire loom to battery terminal. Secure with Zip-ties



IMPORTANT:

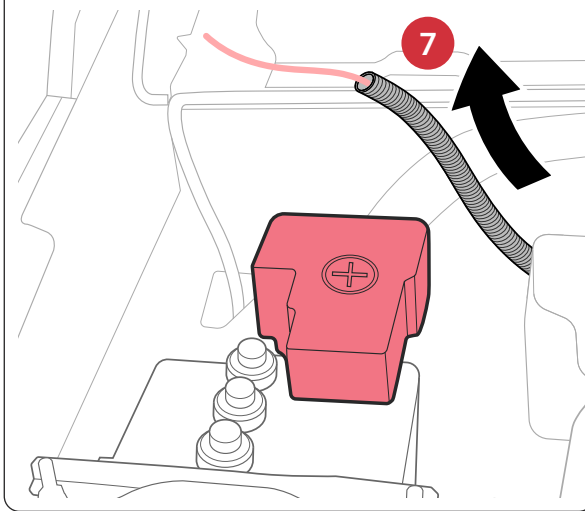
SELECT ROUTE CAREFULLY.

Avoid sharp / abrasive points, moving components and hot areas.

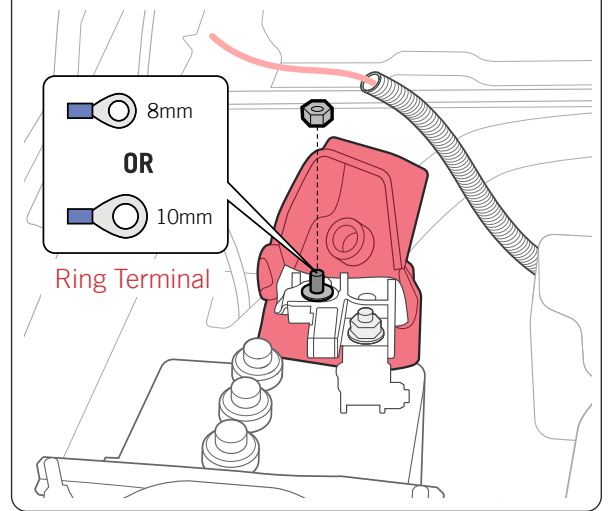
Do not route to the vehicle's rear power supply.

STEP 18

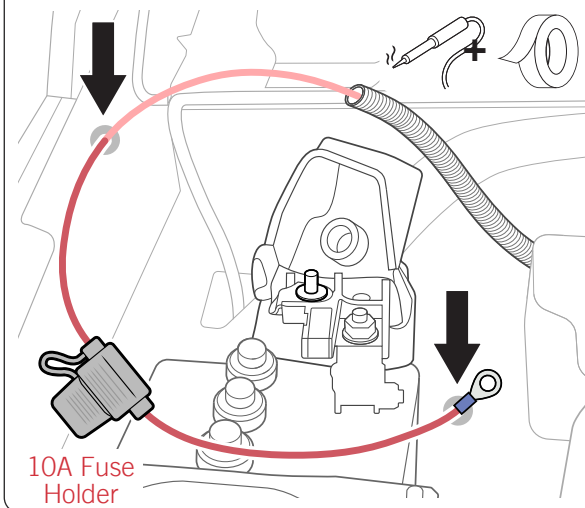
A. Feed Power Wire to Battery.



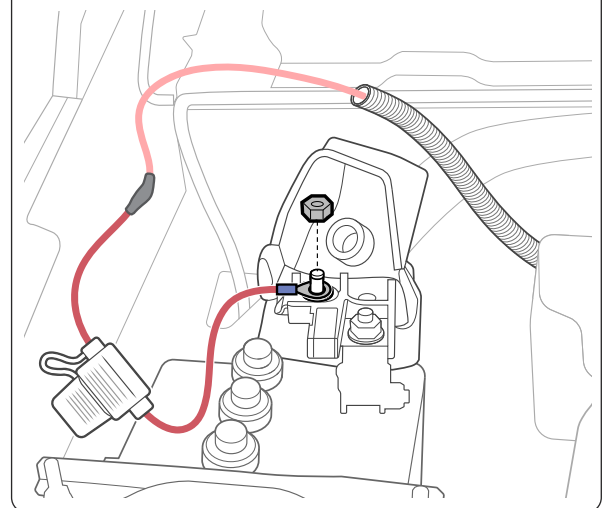
B. Select ring size to suit your battery terminal.



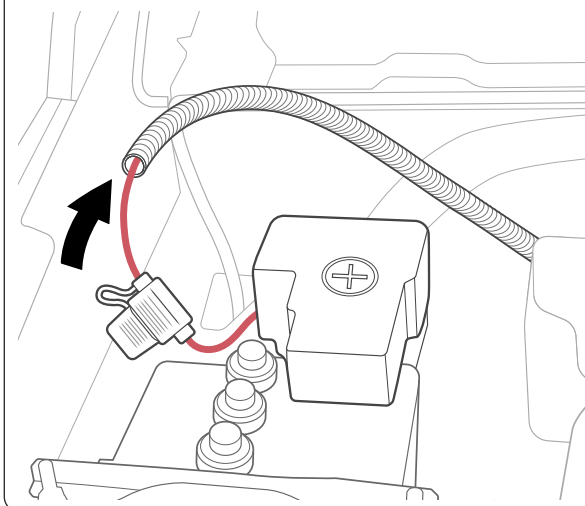
C. Solder Fuse Holder to Power wire and Ring.



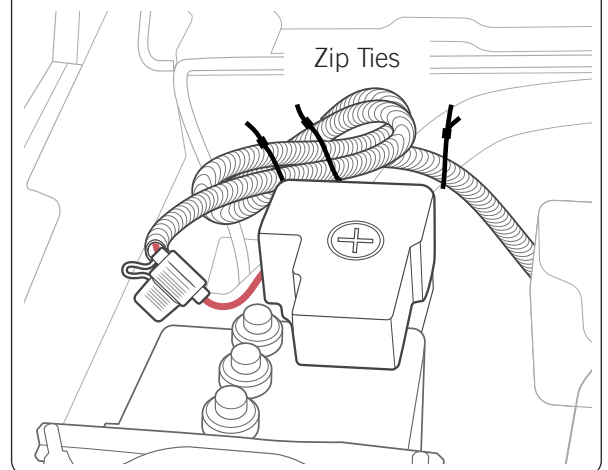
D. Fasten ring to POSITIVE terminal.



E. Push excess wire into loom.

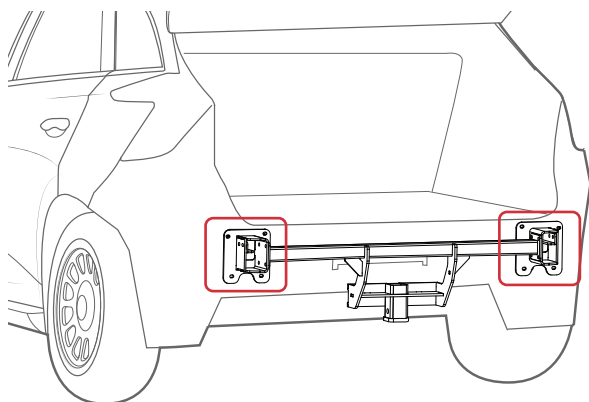


F. Zip-tie remaining wire to a secure location clear of sharp edges and heat.



FINALISE FITMENT

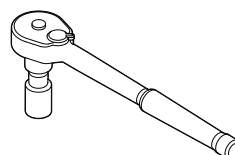
STEP 19



TIGHTEN ALL HARDWARE



M10: 68NM

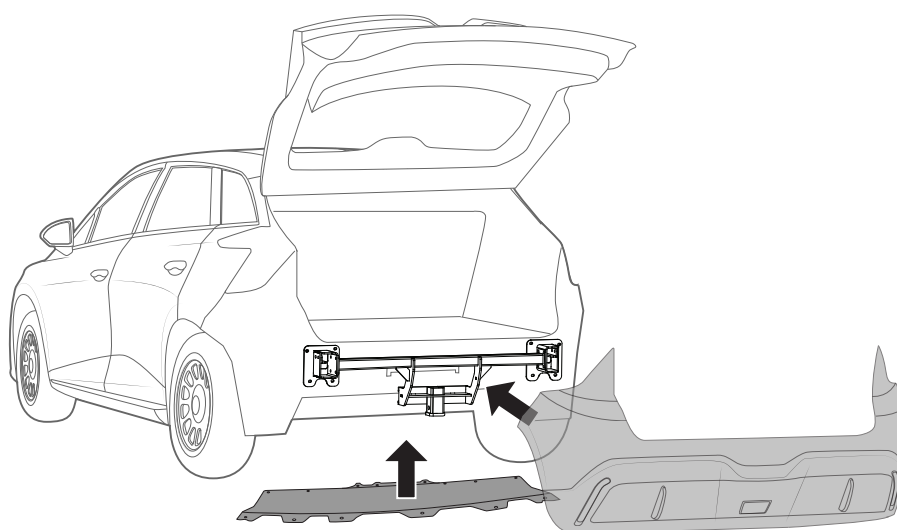


17mm Socket Wrench
+ Torque Wrench

STEP 20

COMPLETE STEPS **01 - 04** IN REVERSE ORDER.

Reinstall all factory components
and hardware to vehicle
manufacturer's specifications.

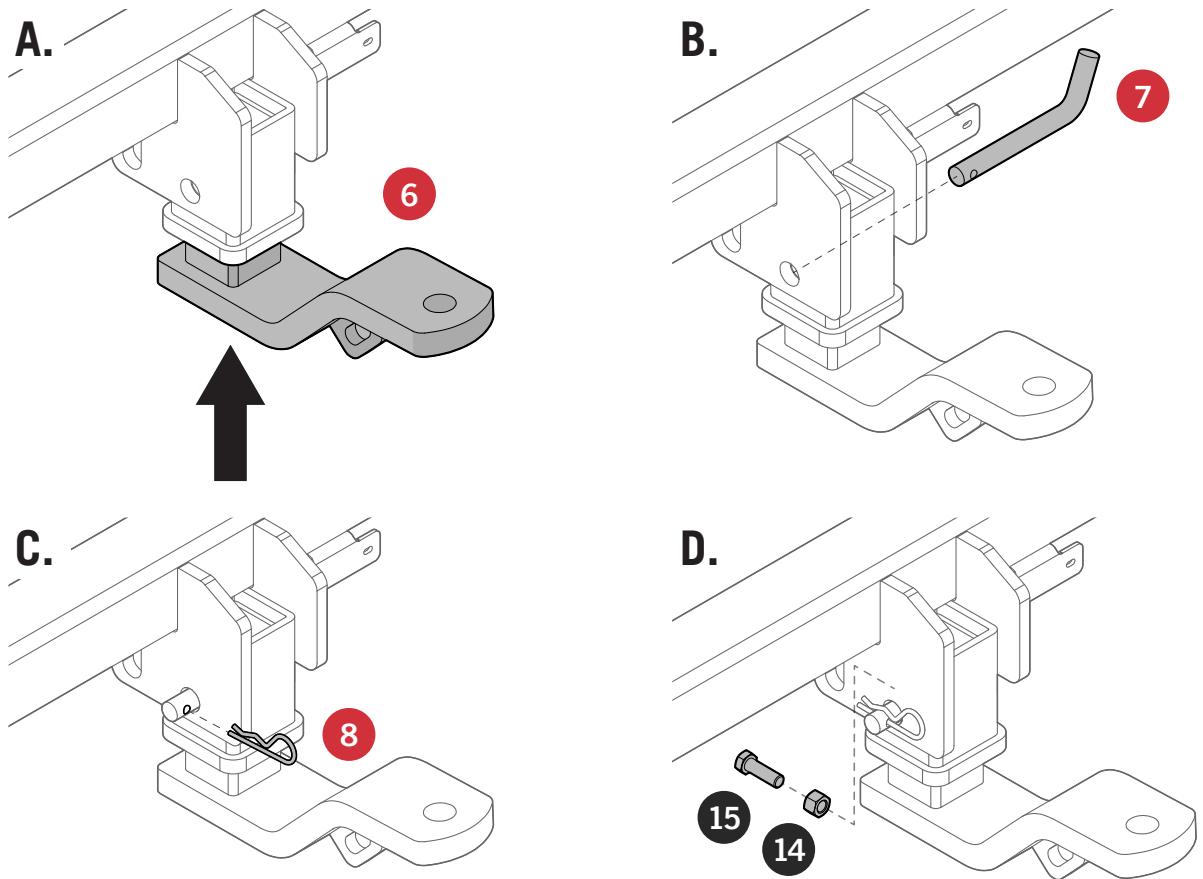




TOWBALL USAGE

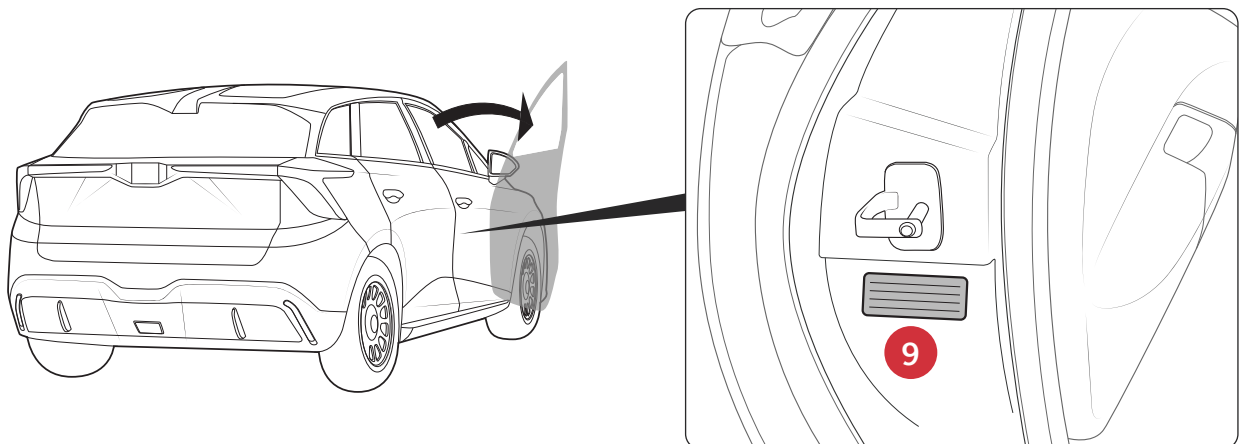
STEP 21

EXAMPLE ONLY:



STEP 22

Place load rating sticker inside the driver's door.





We're here to help

Want to chat? Call **1800 869 227**
or email **hello@carasel.com.au**

Learn more about us at
carasel.com.au



**100% AUSTRALIAN
MADE AND OWNED**



**DRIVE AWAY
LIFETIME WARRANTY**



**MANUFACTURED TO
AUSTRALIAN STANDARD**